

Christian Observer

F. C. W. Meyer
9 June 17

VOL. 105.

LOUISVILLE, KY., JUNE 27, 1917.

NO. 26.

Christian Observer

Presbyterian Family Newspaper

ONE HUNDRED AND THREE YEARS OF CONTINUOUS PUBLICATION.

Founded September 4th, 1813.

HARRY P. CONVERSE, Managing Editor.

REV. DAVID M. SWEETS, D. D., Editor.

Published Every Wednesday by

CONVERSE & CO., (Incorporated.)

412 South Third Avenue, Louisville, Ky.

Remittance should be made by money order, or by registered letter or by draft on some of the large cities. When checks on local banks are sent ten cents should be added to cover cost of collection.

Address all communications intended for the Editorial Department to "The Christian Observer."

Address all business letters to Converse & Co.

For "Terms of Subscription," etc., see foot of page 20.

Entered at the Louisville Post Office as second class matter.

Contents of this Number.

EDITORIAL.		
Editorial Notes	1	
Statistics of the Southern Presbyterian Church.....	2	
Comparative Summary of the Presbyterian Church, U. S., for Forty-Three Years..	2	
The Prophets—Elijah to Christ." New Book by Dr. Andrew W. Blackwood....	2	
Women's War Work Council.....	3	
Armageddon.....	3	
SEMI-ANNUAL INDEX OF THE PRINCIPAL CONTENTS OF THE "CHRISTIAN OBSERVER," JANUARY 1 TO JUNE 30, 1917.....	23	
OUR BOOK TABLE.....	7	
THE SUNDAY SCHOOL.		
Ahaz, the Faithless King, Dr. E. P. Mickel, Ga..	9	
MID-WEEK PRAYER MEETING.		
Local Causes—Synodical Home Missions, Dr. J. M. Vander Meulen, Ky..	8	
YOUNG PEOPLE'S SOCIETIES.		
Tried and Proved, Dr. Wm. M. Anderson, Texas..	8	
ARTICLES.		
The Axe That Did Swim, Dr. J. Wilbur Chapman..	3	
The Mission of the Church Today, Dr. W. L. Caldwell, Tenn..	4	
The Christian School in Mission Lands.....	5	
Erasmus and the Reformation, Dr. H. E. Dosker, Ky..	6	
Doubling in Africa and the Call to Double, Rev. R. D. Bedinger, Africa..	6	
An Evangelistic Conference in Every Presbytery.....Dr. W. H. Miley, Ga..	7	
Stewardship Conference at Montreat, N. C., July 22-27.....	14	
Conference Against Crime.....	14	
Photogravure of Missionary to Africa.....	15	
Kentucky Christian Workers' Conference, Rev. C. Groshon Gunn, Ky..	15	
WOMAN'S AUXILIARY.		
The Woman's Building at Montreat, Mrs. W. C. Winsborough, Ga..	10	
Young People's Conference, Orange Presbyterianial Auxiliary.....	11	
Auxiliary Reports	10, 11	
VERSE.		
The Upper Chamber of Peace...S. L. Frey..	5	
Co-Workers With God...Susan Coolidge..	7	
Percy's Fourth.....May D. McKittrick..	17	
RELIGIOUS NEWS.		
Our Own Church.....	12, 13, 14	
EDUCATIONAL.....		18
HOME CIRCLE.		
The Boy and the Marquis.....	16, 17	
Our Little Ones.—Our Young Folks.—Letters.	17	
Children's Hour.—The Live Doll.....	19	
STORY AND INCIDENT.		
Our First Continental Congress.—The Story of Nathan Hale.—Historic Happenings on the Fourth of July.....	20, 21	
MARRIED AND DIED.....	18	
CURRENT EVENTS.....	23, 24	

EDITORIAL NOTES.

Many times we make mistakes in life by not distinguishing accurately between the permanent and the transient. We give more thought and attention to that which will not abide forever but will pass away in a brief time. We should rather give ourselves to the study and cultivation of that which is permanent, the things that make for the building up of character and the establishment of the heart in eternal truth.

If an evangelistic conference could be held in every Presbytery in our Church during the next three months, an added impetus would be given to the work of winning souls for Christ. The statistics published in this issue show that the number of persons received into our Church last year on profession of faith was smaller than the number received the year before. Dr. W. H. Miley, Superintendent of Evangelism, expresses the conviction that this is due to the fact that the thoughts of the people have been turned toward other things, probably on account of the war, and that we have neglected our opportunities for personal evangelism. Nothing should be allowed to interfere with earnest evangelistic efforts on the part of pastors and people.

The Sunday schools throughout the United States owe a definite duty to the young men who are being called to the colors and who will soon enter the war camps in various parts of the land. Even now groups of men from the National Guard are on duty in squads in lonely parts of the country. An effort is being made by the Kentucky Sunday School Association, and probably this will be followed by other state Associations, to conserve the interests of these young men in the Sunday schools which they have left.

In some schools it has been arranged that a weekly letter, and some little remembrance, shall be sent to every boy or man who has gone from the Sunday school to the war. An honor roll is made up in many schools of the names of those who have gone out from it. One Sunday school has covenanted with the boys who have gone that the entire school will engage in silent prayer every Sunday morning at ten o'clock for those who have entered the army or navy. There are many ways in which Sunday schools can remember and help the brave boys who have gone forth at their country's call.

Hundreds of young men throughout our land are now stationed as military guards over bridges, tunnels, at water reservoirs and other places where an alien enemy might destroy public utilities that are invaluable in time of war. These men are doing the hardest kind of work, which is to do nothing but stand guard. Their duty is to prevent possible trouble. This leaves much time on their hands. Christian people in communities where these soldier boys are stationed have great obligations and opportunities in reference to them. Many persons traveling in automobiles or living nearby could, during the week or on

Sundays, leave with these soldiers Testaments, religious papers and other literature that would prove helpful to them. Many of these soldiers may soon be sent to the front in France or Flanders, and now is the time to implant in their minds the truth of God.

Christian people in cities where Officers' Reserve Corps Training Camps are located have a splendid opportunity to influence the soldiers for righteousness through kindly courtesies and social attentions. Some churches near the camps are urging their members to invite the young men who are in training for officers to attend the church services and to go to their homes for dinner after the church service is ended. Such little attentions mean much to these young men and may turn them away from many hurtful temptations.

The Minutes of the General Assembly that met in Birmingham, Alabama, May 17-24, are issued from the press this week. The Stated Clerk of the Assembly, Rev. Thomas H. Law, D. D., has given to the Church the complete bound volume of the Minutes in less than four weeks after the date of the adjournment of the Assembly. The Minutes of the Assembly form an exceedingly valuable book for both ministers and officers of the Church. Every elder and every deacon should possess a copy and should study carefully the actions taken by the Assembly and endeavor to familiarize himself with the varied and vital forms of work in which our Church is engaged.

A clarion call was sounded by the General Assembly in Birmingham to the entire Church in view of the four hundredth anniversary of the Reformation, which is being celebrated this year. This call lays urgently upon the Synods the imperative and pressing needs of our educational institutions, and earnestly entreats them to persevere in measures to provide for their necessities, especially to signalize the event by mighty forward strides in the equipment of our educational institutions. Following the suggestion of the Synods and the General Assembly, the colleges of our Church are seeking to secure endowment for the chair of the Bible and subjects of Applied Christianity. Members of our churches are urged to consider as a privilege this opportunity to endow such a chair as a memorial which shall bear perpetually the name of some loved one and which will add much to the training of the future leadership of the Church. Such a memorial is far better than a shaft of marble.

The summer conferences conducted by the various agencies of the Southern Presbyterian Church at Montreat, North Carolina, are now in full swing. The Young People's Conference begins this week and will continue through July 8. The Woman's Summer School of Missions will be held July 8-15; the Conference on Christian Life and Doctrine, July 15-22; the Bible and Christian Stewardship Conference, July 22-29; the Sunday School Conference, July 29-August 5; Conference on Christian Education and Ministerial Relief, August 5-8; Conference on Home Missions, August 8-12; Evangelistic Conference, August 12-19; Conference on Foreign Missions, August 19-26. In this delightful mountain

If I live as if there were no God—no God to protect, no God to console, no God to punish—what am I but the fool that said in his heart, "There is no God?" What is the atheism of the lips compared with the atheism of the life?—Amos R. Wells.

Prayer is an attitude; it is an attitude of the spirit and of the soul. It is not merely the repetition of our petitions. Christian prayer is asking God for things agreeable to His will.

Woman's Auxiliary.

For the Christian Observer.
THE WOMAN'S BUILDING AT MONTREAT.

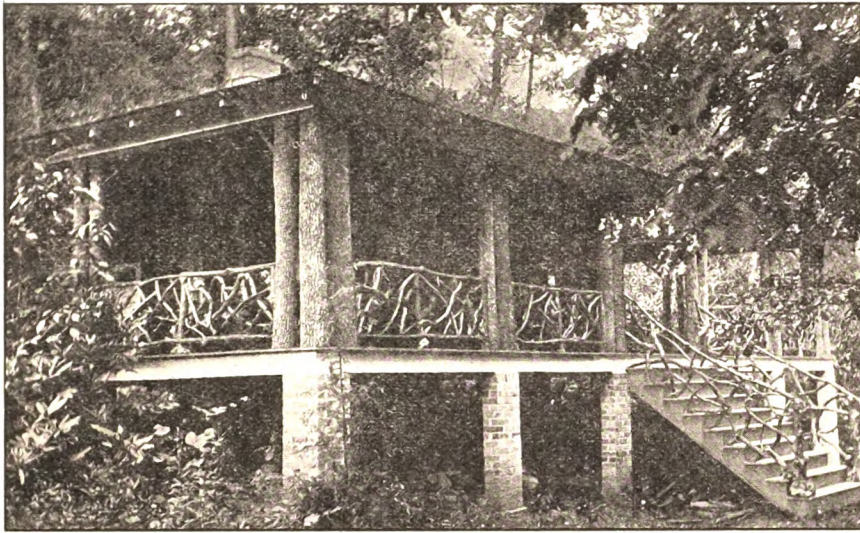
BY MRS. W. C. WINSBOROUGH,
Superintendent.

The women of the Church are greatly rejoiced over the completion of the Woman's Building at Montreat.

This modest, though complete, little structure will serve as headquarters for the office work of the Woman's Auxiliary and as a meeting and conference place for the women who are attending Montreat.

Owing to increased price of building material, the expense of erecting this building has been more than was

25; Matthews, Mrs. J. J., Treas., Holly Grove, Ark., 10; Missionary Society, Presbyterian Church, Orlando, Fla., 10; Missionary Society, Jackson Presbyterian Church, Jackson, Ala., 2; Mary L. Cannon Society, Presbyterian Church, Shelbyville, 5; Missionary Society, Bunkie, La., 1; Missionary Societies, Mayesville, S. C., 15; Missionary Society, Crewe, Va., 1; Mexico Missionary Society, Mexico, Mo., 5.25; Meachum, Mrs. R. R., Petersburg, Va., 1.
North Alabama Presbyterial, \$15; New Bern, N. C., Auxiliary, 16; New Orleans Presbyterial, 14; Neisler, Mrs. C. E., Kings Mountain, N. C., 5; Nashville Presbyterial, 5; Norfolk Presbyterial, 25; North Mississippi Presbyterial, 10; Nisbet Missionary Society, Grenada, Miss., 2.50.
Orange Presbyterial, \$11; Olivet Presbyterial Ladies' Aid Society, Staunton, Va., 2; Ouachita Presbyterial, 5.
Paducah Mecklenburg Presbyterial, \$10; Potomac Presbyterial, 20; Parish, Miss Mary N., 1; Palmyra Presbyterial, 25; Piedmont Presbyterial, 5; Presbyterial Ladies' Aid Society, Marion Junction, Ala., 2; Pinner, Mrs. John B., 2; Puelt, Mrs. W. B., Belmont, N.



The Woman's Building at Montreat, N. C.

anticipated, and while a response of the women both in personal gifts and through societies and Presbyterials and Synodicals has been most generous, we owe about \$500 on the building.

We earnestly desire to have the debt entirely met at once and hope that any reader who can help us by a gift, large or small, will forward it at once plainly marked "For Woman's Building," to the Woman's Auxiliary, Peachtree & Tenth St., Atlanta, Ga.

Below is a list of gifts received up to June 14:

Contributions to Montreat Building.
Atlanta Presbyterial, \$37.50; Asheville Presbyterial, 5; Athens Presbyterial, 10; Augusta Presbyterial, 16; Augusta Missionary Society, Augusta, Ark., 3; Abingdon Presbyterial, 10; Anderson, Mrs. R. C. and Mother, 20.
Berry, Miss E. A., \$1; Brownwood Presbyterial, 5; Bismark Society & Bellevue Society, Caledonia, Mo., 4; Bethel Presbyterial, 5; Brazos Presbyterial, 5.
Coldwell, Miss Emma \$5; Chalmers, Miss Mary S., Richmond, Va., 5; Central Texas Presbyterial, 20; Cooper, Miss Lulu 5; Converse, Mrs. J. B., Morristown, Tenn., 5; Charleston Presbyterial, 5; Cherokee Presbyterial, 20; Catherine Watson Missionary Society, 2.50; Charlton, Mrs. W. M., Anchorage, Ky., 3; Cash, Montreat, N. C., 2; Cash, Hugo, Okla., 1; Columbia Presbyterial, 5.
Dallas Presbyterial, \$10.
East Hanover Presbyterial, \$10; East Mississippi Presbyterial, 10; Executive Committee of Concord Presbyterial, 12.50.
Florida Presbyterial, \$7; Front Royal Ladies' Aid Society, Front Royal, Va., 2.
Graham, Mrs. J. C., Lane, S. C., \$1.45.
Hogan, Mrs. Jesse F., Mobile, Ala., \$10; Hanna, Miss Jennie, Kansas City, Mo., 1; Holston Presbyterial, 5; Hedgesville Aid Society, Hedgesville, W. Va., 1; Hull Memorial Missionary Society, Savannah, Ga., 1.
Inasmuch Society, First Presbyterian Church, Norfolk, Va., \$10.
Johnson, Mrs. A. J., \$1; Junior Auxiliary, Tabbs St. Church, Petersburg, Va., 1.
Kirkpatrick, Mrs. R. L. and Mrs. Laura, Memphis, Tenn., \$2; Kanawha Presbyterial, 10.
Ladies' Aid Central Pres. Ch. Washington, D. C., \$5; Ladies' Society, First Pres. Ch., Richmond, Va., 5; Lafayette Presbyterial, 30; Louisville Presbyterial, 25; Love, Mrs. Herbert, 5; Ladies' Home Missionary Society, Albany, Ga., 5; Ladies' Aid & Missionary Society, Benton City, Mo., 5; Louisiana Presbyterial, 10; Ladies' Aid Society, Government St. Church, Mobile, Ala., 5; Ladies' Aid & Missionary Society, Macon, Miss., 1; Ladies' Aid & Missionary Society, Tabb St. Church, Petersburg, Va., 3; Ladies' Aid Society, Mizpah Church, Richmond, Va., 1; Ladies' Aid, Presbyterian Church, Shreveport, La., 5; Ladies' Aid Society, Fairmount Presbyterian Church, 1; Ladies' Auxiliary Society, Raeford, N. C., 1; Ladies' Missionary Society, Iona Church, McDonald, N. C., 2; Ladies' Aid Society, Presbyterian Church, Huntington, W. Va., 2; Ladies' Aid & Missionary Society, Providence Church, Belona, Va., 1; Ladies' Society, Presbyterian Church, Mena, Ark., 2; Ladies' Aid Society, Sweetwater, Tenn., 5; Ladies' Missionary Society, Elizabethtown, Ky., 1; Ladies' Missionary Society, Hebron Branch, Presbyterian Church, Wilson, Va., 1; Ladies' Missionary Society, Presbyterian Church, Chipley, Fla., 1.50; Ladies' Missionary Society, Presbyterian Church, Greenwood, S. C., 5.
Memphis Presbyterial, \$10; Mecklenburg Presbyterial, 12.50; Montgomery Presbyterial,

C., 3; Presbyterial Auxiliary of El Paso Presbyterial, 5.
Red River Presbyterial, \$11; Robinson, Mrs. Coit M., Lowell, N. C., 1; Ray, Mrs. Walter & Miss Rubie, 10; Robbins, Frances A., Tampa, Tenn., 1; Rankin, Mrs. Chas., Hallsboro, N. C., 5; Ramsey, Mrs. W. B., Hickory, N. C., 5; Richey, Miss Cora, 5; Roanoke Presbyterial, 10.
Suwanee Presbyterial, \$12.50; St. Johns Presbyterial, 10; Study Circle of Presbyterian Church, Columbia, Mo., 2; S. C. Presbyterial, 10; Sara Lapsley Society, First Church, Anniston, Ala., 4; Simpson, Mrs. W. W., 10; Sweeney, Miss Betti O., 1; Sentell, Mrs. G. W., Bunkie, La., 1; S. C. Synodical, 50.
Tupelo Missionary Society, Tupelo, Miss., \$5; Tadlock, Mrs. J. T., Paris, Ky., 10; Tuscaloosa Presbyterial, 10; Transylvania Presbyterial, 10; Thompson, Mrs. Atwell & Miss Lillie L. Fewell, 7.50; Thorpe, Mrs. A. P., Rocky Mt., N. C., 10; Todd, Mrs. J. W., and Miss Todd, 5.
Upper Missouri Presbyterial, \$18.50.
Van Tuyl, Mrs. A. J., Colorado, Tex., \$5.
Woman's Missionary Society, Campbell Memorial Church, Weems, Va., \$1; Woman's Auxiliary, First Presbyterian Church, Warren, Ark., 2.50; Woman's Missionary Society, First Presbyterian Church, Danville, Ky., 2; Woman's Society, Columbia, Mo., 5; Woman's H. & F. Missionary Society, Georgetown, Texas, 5; White, Mrs. J. S., 1; Williamsburg Presbyterial Church, Kingstree, S. C., 2; Washburn Presbyterial, 5; Woman's Missionary Society, Bethel Church, Bayview, Fla., 5; Woman's Auxiliary, Third Presbyterian Church, Birmingham, Ala., 1; Winchester Presbyterial, 7; Woman's Missionary Society, Owensboro, Ky., 3; Wilmington Presbyterial, 8; Westminster Worker Society, of Richmond, Va., 1; Woman's Missionary Society, New Wappetaw Church, McClellanville, S. C., 1; Webb, Miss Maude E., Grayson, Ky., 1; Westminster Guild, First Presbyterian Church, Houston, Texas, 10; Woman's Department Presbyterian Church, Baton Rouge, La., 5; Woman's Missionary Society, McDowell Presbyterian Church, McDowell, Va., 3; Woman's Missionary Society, Culpeper, Va., 50; Woman's Missionary Society, Monterey, Va., 5; West Lexington Presbyterial, 15; Willis, Mrs. R. B., 1; Whaley, Mrs. Thomas, Bennettsville, S. C., 1; Woman's Auxiliary, Second Presbyterian Church, Birmingham, Ala., 5; Woman's Society, North Avenue Presbyterian Church, Atlanta, Ga., 5; Woman's Society, First Presbyterian Church, Asheville, N. C., 5.
Young Women's Society, First Presbyterian Church, Anniston, Ala., \$11; Yanceyville, N. C., Missionary Society, 2.50; Young Ladies' Guild, Laurinburg, N. C., 5; Young Ladies' Missionary Society, Kansas City Church, 1.
Total to June 14, \$1,058.70.

Atlanta, Ga.

ASHEVILLE AUXILIARY.

The twelfth annual session of Asheville Presbyterial Auxiliary was held at Bryson City, N. C., May 8-9. Thirty delegates and visitors registered. An unusual number of societies failed to respond to the roll call, but the interest manifested made up in some measure for lack of numbers.

A special feature of the program was the large chart hung where it could be read from the farthest seat in the church. This statistical report of the work of every society added greatly to the interest, and many were the copies taken home of what "Others are doing."
Foreign Missions was well empha-

sized, first by talks by each of our missions answering the question, "If I had \$10,000 where should the money go to meet the most pressing need?" Strong convincing arguments were used by each speaker, but when put to the vote China was selected, that field being in the charge of Mrs. G. H.



AGNES SCOTT COLLEGE
DECATUR (6 Miles From Atlanta) GEORGIA
NO PREPARATORY DEPARTMENT
DORMITORY CAPACITY LIMITED TO 300
For Catalog and Bulletin of Views, Address the President
F. H. GAINES, D. D., LL. D.

Flora Macdonald College

Successor to Southern Presbyterian College and Conservatory of Music.

For Catalogue, Address
REV. C. G. VARDELL, President. RED SPRINGS, N. C.

LINDENWOOD COLLEGE.

Oldest Presbyterian College for Young Women west of Mississippi River.
50 minutes from St. Louis. Healthful location. Homelike Christian atmosphere.
34 acres of campus. Dormitories with hot and cold running water in every room. Tub and shower baths. Over \$300,000 in improvements in last 3 years. Increased endowment.
Cultural and Vocational Training. Superior Music Conservatory. Terms moderate. Send for catalog. J. L. ROEMER, President, Box 1, St. Charles, Mo.

1776 HAMPDEN-SIDNEY COLLEGE 1917.

"The Ideal Southern College." Thorough training. Christian atmosphere. Choice Associations. 14 unit entrance requirement. Confers B. A., B. S., M. A. New gymnasium. Large athletic field. Military training. Session opens September 12, 1917.
For catalogue, address H. T. Graham, President, Hampden Sidney, Va.

Greenbrier

A Presbyterian Military School, Lewisburg, W. Va.

An up-to-date military boarding school for boys. Large corps of instructors. A quiet, healthful location in a bracing mountain climate. 2300 ft. altitude. On Main Line C. & O, R R. Brick buildings, gymnasium and athletic field. Terms \$300
For illustrated catalogue, address Col. H. B. MOORE, A. M., Principal, Box 20.

CHICORA COLLEGE FOR WOMEN

THE PRESBYTERIAN COLLEGE OF SOUTH CAROLINA.

A Standard College of Distinction and Character.

For Catalogue and Information, address
Pres. S. C. BYRD, D. D., Columbia, S. C.

THE McCALLIE SCHOOL FOR BOYS

On Battlefield of Missionary Ridge, Chattanooga, Tenn.

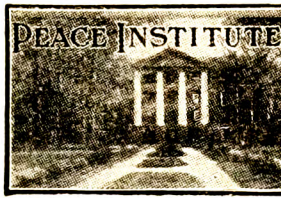
Founded by Rev. T. H. McCALLIE, D. D.

Points of Emphasis:

1. A Christian Home with firm discipline.
2. Men teachers of ability and Christian character.
3. Individual attention to pupils.
4. Average class not over ten.
5. Methods of study taught.
6. Prepares for best colleges.
7. Bible read and taught in school.
8. Honor system works here.
9. Beautiful location among mountains.
10. Nearly 1,000 feet above sea.
11. Forty acres in country with lake.
12. Careful protection against fire.
13. Use of tobacco not allowed.
14. Military drill and adapted exercises.
15. Students in Headmasters' homes.
16. Excellent fare and good water.

For attractively illustrated catalogue, address

Headmasters: { S. J. McCALLIE, M. A.
J. P. McCALLIE, M. A., Ph. D., Univ. of Va.



PEACE INSTITUTE FOR YOUNG WOMEN

Collegiate and Preparatory Courses. Graduates credited for Teachers' Certificates by State Department of Education. Faculty of Specialists. Excellent, roomy buildings. Large, beautiful campus for outdoor sports. Whole-time Athletic Director. Domestic Science and Art. Gymnasium. Fine climate. Special educational opportunities in capital city. Delightful social advantages. Cheerful homelike surroundings. Individual development. Moderate expenses. Rooms limited. For rooms, catalog or further information, write
MISS MARY OWEN GRAHAM, Pres., Raleigh, N. C.

SYNODICAL COLLEGE, FULTON, MISSOURI.

A FULLY ACCREDITED JUNIOR COLLEGE FOR GIRLS.

All modern advantages in Literature and Science, Music, Art, Expression, Home Economics, Physical Culture.

Faculty of specialists and experts, chosen not only for their professional qualifications but for their cultured Christian character and influence as well.

Complete equipment in Class-rooms, Library, Conservatory and Laboratories. Student body carefully selected and limited to seventy-five.

Charges reasonable. For catalogue, address JOHN JAMES, President.

Chamberlain Hunt Academy

PORT GIBSON, MISS.



YOUR BOY DESERVES THE BEST TRAINING POSSIBLE. There is no better Training School for Boys in the South. Faculty of Christian Men—Military Discipline—Fine Climate—Accommodations limited. Owing to Endowment, rate only \$220. Write for catalog and other information. (Mention Observer).

G. T. THOMSON, D. D. Pres., Box Q.

TEXAS PRESBYTERIAN COLLEGE

FOR GIRLS

Endowed. Full A. B. Courses.

R. C. SOMMERVILLE, A. M., Pres., Box 50, MILFORD, TEXAS.