

THE  
D A K O T A  
FIRST READING BOOK,

PREPARED BY

STEPHEN R. RIGGS, and GIDEON H. POND,  
(*Missionaries.*)

PRINTED FOR THE AMERICAN BOARD OF COMMISSIONERS FOR FOREIGN MISSIONS.

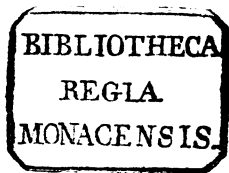
---

CINCINNATI:  
KENDALL AND HENRY PRINTERS.

1820.

Digitized by

Google



# DAKOTA



OYAWA WOWAPI.

OTOKAHE KIN.

# DAKOTA OOWAPTAYA.

A	a	a
B	b	bi
C	c	ci
Ĉ	ĉ	ĉi
D	d	di
E	e	e
G	g	gi
Ĝ	ĝ	
H	h	hi
I	i	i
J	j	ji
K	k	ki
Q	q	qi
M	m	mi
N	n	ni
Ñ	ñ	
O	o	o
P	p	pi
Ā	ā	pi
R	r	ri
S	s	si
T	t	ti
Ĥ	ĥ	ti
U	u	u
W	w	wi
X	x	xi
Y	y	yi
Z	z	zi

## OYAWA PTEPTECEDAN.

### WOONSPE 1.

Hokxipidan wicinyanpidan ko owasin wowapi onspeičiciya po. Taku oiyokipi rinca wowapi kin hee. Tuwe onspeičiciya eca pidaičiya ece. Wana Dakota iapi kin eñ wowapi kagapí qa wanji nicupi.

Onmaspe kte xni, eye xni wo ; qa, Epa xta okini mdaxna kinhan ímarapi kta, nakun eye xni wo. Wowapi kin yurdece xni wo qa nakun duxape kte xni do. Aničiciya ehantanhan tanyan onnispe kta ce.

---

qa	ko	кта	do
kin	eñ	wo	ce
xta	he	xni	e-ye

---

### WOONSPE 2.

Detanhan wicoran wanjikxidan ociciyake kta. Tanyan onspeničiciye cinhan waxteyadake kta. Ecin waxte.

Hdaheya epe kta qa heceñ awacani kinhan owasin tanyan oyakarnige kta. Wicaxta tankapi qa xiceca ko oranpi kin ociciyake kta. Jehowa tokeñ oranye cin nakun wanjikxi dawa kta ce.

Cinx aićiciya wowowapi kin eciyatanhan taku owaxtecake wandake kta. Iyohakam wowapi wiconi nakun onnispe kta.

Tuwe he onspe qa eceñ ope cinhan tokata taku waxte wanyake kta. Owehde owasin pteptecedan wakage kta qa heceñ tanyan oyakihi, oyakitpani wanice kta.

---

cin	tan-yan	to-keñ
cinx	wa-xte	ta-ku
e-cin	he-ceñ	tu-we
e-pe	kin-han	na-kun
o-pe	cin-han	on-spe

---

### WOONSPE 3.

Wawicaryapi qon.

Wanakaja Wakantanka maka kin kaga. Taku akañ iyeyecin nakun owasin kaga. Qa nakun anpetu wi hanyetu wi wicanrpi ko kaga.

Hena owasin yuxtan unkan ehakedan wicaxta wan kage ça Adam eya caxton. Winorinca wan nakun kaga Ewe eciyapi. Heceñ wicaxta tokaheya kin Adam hee qa winorinca tokaheya kin Ewe ee.

---

wi	ma-ka	Adam
ça	ka-ga.	E-we
qon	a-kañ	un-kan
wan	he-na	yu-xtan

---

#### WOONSPE 4.

Wicaxta tokaheya oran qon.

Hehan wicaxta tokaheya oran qon wanji oci-ciyake kta. Wicaxta kin Wakantanka waxte qa wacin iyokixice xni kaga qa woyute tona cin eceñ innahan qu. Waxtekidake ça on hecon.

Tuka Adam Wakantanka anakicigoptan xni. Taku xica e econ qa on Wakantanka caniyeye. Wicaxta tokaheya Adam hee epe cin. He ateunyanpi qa xicaya econ kin hecinhan unki-nmanpi. Taku xica e iyokipiya econkupi.

he-han	wa-cin	he-con
o-ran	to-na	tu-ka
wan-ji	e-ceñ	xi-ca

---

WOONSPE 5.

Kain oran qon.

Wicaxta wan Kain eciyapi token̄ oranye cin naron wacani naceca. Ito wanji ociciyake kta. Adam cincawicaye cin wanji hee. Tuka wicaxta xice ča Wakantanka ohoda xni, sunkaku nakun wacin eñ yuze xni cee. Sunkaku kin Ebed eya cajeyatapi, he qe wicaxta waxte e on kipajin. Hecen unhanketa kici maga ekta iyukanpi unkan Kain sunkaku kin kikte. Hecon unkan Wakantanka xicedake ča nina canñiyeye. Kain oran kin he xica e. Niye qe hecanon kte xni epca manke.

---

Ka-in	yu-za	ni-na
E-bed	ki-ci	ni-ye
to-keñ	e-cta	e-pca
na-ron	ki-kte	man-ke



## WOONSPE 6.

## Minitan qon.

Minitan qon wana tuwe oniciyaka naceca. Wakpa mini sota kin wetu eca minitan aya ce kin he wake xni ce. Wanakaja minitan maka kin owancaya iyakawinyan iyaye cin he wake.

He ehañ wicaxta maka akañ iyeye cin owasin nina xicaya oranyanpi. Heon etanhan Owihanke wanica owihankewicaya. Anpetu wikcemna topa qa hanyetu nakun iyenaka qa ohiniyan nina magaju. Paha tehan wankañtuya can akañ iyeye cin nakun mini kin iwankam iyaye ça owasin eceñ tanin xni.

Taku maka akañ ni un kin owasin miniñ ta. Wicaxta winorinca xiceca, woteca, ko owasin tapi. Tuka wicaxta wanjidan waxte e eñ un Nowa eciyapi. He Wakantanka sdonya unkan wata wan tanka rinca kar xi qa tawicu ta xiceca ko om wata kin eñ ye xi.

Woteca ocaje iyeye cin owasin zitkadan ocaje owasin etanhan nom nom nakun wata kin eñ niyake wicayuhe xi. Hena niwicaye kta e hecon. Nowa eceñ econ qa heceñ wata tanka kin eñ ni un.

Wicaxta kin he ixnana Wakantanka ohoda qa waxtedaka he etanhan Wakantanka niye. Tuka betanhan wicaxta maka ohnaka owasin Jehowa ohodapi xni, wicaxtaxni oranyanpi qon on owasin ihanḡwicayapi.

---

can	No-wa	wa-ta
on	wa-na	tan-ka
om	we-tu	rin-ca
ni	tan-in	wa-kpa
un	pa-ha	so-ta
ta	te-han	mi-ni-tan
xi	mi-ni	wo-te-ca

---

### WOONSPE 7.

Mose okiranyanpi qon.

Wana ehantanhan wañiyetu ota wiyohiyan-pata itoheya tehan makoce wan wanke cin, wicaxtayatapi wan xice cin eñ un, Paro eciyapi. Ta oyate kin hunr xicawicadake ca xicaya wicakuwa ece.

Eñ hokxiyopa wicatonpi kin tona wica eca wakpa kin eñ miniñ erpewicayapi cee kta, keya.

Unkan icunhan eñ hokxidan wan tonpi Mose eciyapi. Hokxidan waxte qa hunku kin nina waxtekidaka. Wakpa kin eñ miniñ erpeye kte cin tawateñye xni.

Dehan winorinca kin hunr xicaya oranyanpi qa cincapi kex wicakiktepi ece. Tuka Mose hunku kin winorinca waxte e qa Jehowa ohoda, oie kin anakicigoptan ece. Etanhan wi yamni behanyan ti maheñ hokxidan kin narmana hduha yanka. Tuka wicaxtayatapi kin kokipe ça, Wicaxtayatapi decamon.kin sdonmaye cinhan mi cinca om makte kta ecin, qa heceñ narmana hduha cin ikopa.

Unkan cedi heca on watadan wan kage ça Mose eñ eonpa qa wakpa kin kahdaya ehde. Hecon unkan Mose tankeku awanhdağ xi. Hececa unkan icunhan Paro cunwintku omani un qa heñ hiyaye ça wata qon wanyağ iheya, unkan wicinyana wan eyaku xi. Wicinyana kin heceñ eyaku. Wata kin yurdoka unkan Mose ceya. Paro cunwintku onxidake ça yuha ti yata hdi qa, Micinca kin dee kta ce, eya.

Mose Wakantanka waxtedake ça eceñ okicipe.

Unkan ihakamyā wana wicaxta tanka ehan i,  
 unkan Wakantanka wicaxtayatapi kaga.

mi	Mo-se	yan-ke	na-rma-na
ti	Pa-ro	ce-di	Je-ho-wa
heñ	wan-ke	e-hde	ho-kxi-dan
hunr	ton-pi	cin-ca	de-ca-mon
wi-ca	hun-ku	o-ho-da	ka-hda-ya
ce-ya	ma-heñ	ko-ki-pa	tan-ke-ku



WOONSPE 8.

Mose oranye cin.

Wakantanka Mose wicaxtayatapi kaga epa.

Ta oyate kin Juda ewicakiyapi. Iye ta makoce kin ekta Mose awicaye, unkan mde wan tanka rinca tahepi wanka. Mde xa eciyapi.

Wicaxta winorinca xiceca ko wicota qa mde kin iyuwegapi kte cin okihipi xni. Wata nicapi kin he etanhan. Tokawicayapi kin wana kiyadan tatpe wica upi qa nina ikopapi qa Wakantanka hoyekiyapi.

Icunhan Wakantanka Mose heciya ; can saḡye yaye cin on mini kin apa wo. Mose hecon unkan mini kin akipam iyaye ča anokatanhan mini pahaya wanke ča cokaya canku puza wanka.

Heceñ Juda oyate kin ohna eyaya qa akasanpa tanyan ihunipi. Tokawicayapi qon tawicapapi tuka mini kin aohdutewicaya qa owasin rin miniñ tapi.

Juda oyate kin Wakantanka ta oyate kin ee. Dakota kakeñ eyapi kta naeeca ; Tona Wakantanka ohoda qa cekiyapi eca hena ksapapi. Tona Wakantanka okicipapi eca tuktekteñ kopehdapi kex wacin iboxakapi xni ece.

---

mde	Wo-on-spe	Da-ko-ta	he-ci-ya
xa	ma-ko-ce	xi-ce-ca	co-ka-ya
rin	o-ya-te	wi-co-ta	tu-kte-kteñ
kex	ta-he-pi	e-tan-han	ksa-pa-pi

## WOONSPE 9.

**Wakantanka** wo wicaqu qon.

Juda oyate kin waniyetu ota rowoskan ece e omani yakonpi. Makece xice ca taku yutapi kte cin wanica. Taku yutapi xni unkan Wakantanka kakeñ wo wica qu ece.

Hanyetu eca tipi kin ihdukxan taku yutapi kte cin marpiya eciyatanhan hinrpaya ece. He mana eciyapi. Hanrana hankiktapi qa wi hinape xni owasin aiciciyağ pahi ipi ece. Rewanke se wanke. Cikcistina hmihmiyana qa skuye rinca. Tuka wi hinapa eca owasin xdo cee. Wa skan se iyececa.

Anpetu xakpe Wakantanka heceñ mana ahinhiwicaya cee. Tuka ixakpe can kin eñ eya hinrpaya cee qon nonpa akihde hinrpaya ece.

Anpetu iyohi eya pahipi cee qon, ixakpe anpetu kin eñ nonpa akihde owasin pahipi ece. Anpetu ixakowin kin eñ taku iyeyapi xni cee. Wakantanka Juda oyate kin hewicakiya; Anpetu wakan kiksuya po. Unkix nakun unkapi. Ito anpetu wakan kin eñ taku iyahni kte xni do. Tanyan kiksuya wo.

Wa	ma-na	ma-ko-ce	Wa-kan-tan-ka
skan	i-to	an-pe-tu	wa-ni-ye-tu
se	sku-ye	han-ye-tu	i-xa-ko-win
do	un-kix	i-yo-hi	e-ci-ya-pi
xdo	wa-kan	ki-ksu-ya	

---

WOONSPE 10.

Owihanke Wanica wakanyan mini wicaqu.

Ake iyohakam Juda oyate kin mini wanica eñ etipi. Ecin makoce xica cee qa mini wanica. Qa imnija wan tanka icahda tipi qa nina iwica-puza.

Mose wicaxtayatapi kin heciyapi ; Hehehe, ipuza untapi kta, wana kitanyeñ ni unkanpi ce. Unkan Owihanke Wanica Mose heciya ; Imnija kin eñ inajin qa can saḡye yaye cin he imnija kin iwankapatanhan yuza wo.

Mose can saḡye ye ciqon hduha eñ inajin qa on imnija kin ape ça imnija kin etanhan wakpa tanka se mini kaduza. Oyate kin iyuxkinyan imnahan yatkanpi.

Mose iye cinka minin kin kadusye nacea kecani. Hiya, hecetu xni ce. Owihanke

Wanica hecon. Owihanke Wanica ix nana  
waxake ča waxte.

Ju-da	wa-ni-ca	o-wi-han-ke
ti-pi	wa-kan-yan	i-yu-xkin-yan
yu-za	i-mni-ja	i-yo-ha-kam
saġ-ye	i-mna-han	i-wi-ca-pu-za
hi-ya	ka-du-za	wi-ca-xta-ya-ta-pi



### WOONSPE 11.

Jehowa Ihawicakta ece.

Edija ta makoce kin eñ akiranpi unkan Jehowa kakeñ eciya ; Ito kaki wakpadan wan wanke cin, ekta eun wo, kinhan kangi kin heca wo nicaipi kta ce qa wakpa mini kin etanhan datkan cee kta ce.



Hecen ekta i unkan kangî kin anpetu iyohi wo kaipi ece. Tuka magaju xni on unhanketa wakpa kin mini puza. Hececa unkan Jehowa heciya ; Otonwe ekta ya wo qa wiwazica wan wo niçu kta ce.

Edija eñ i qa wiwazica kin wo kida. Wiwazica kin warpanica e qa itkom heciya ; Wicawaka ce—aguyapi mdu wihdi ko ehake tonana mduha. Ehake aguyapi wanjidan mi cinca om wawate cinhan untapi kta.

Heca xta, ito wanji maqu wo. Jehowa tanyan iwanniciyake kta ce, Edija eciya. Hecen qu qa ix wiwazica cinca ko om yutapi. Anpetu ota hecon tuka ohiniyan aguyapi mdu kokan ohna hecin eceñ kicihan cee—wihdi janjan ohna hecin nakun eceñ kicihan cee. Jehowa tanyan awankiciyake cin on hececa. Ito, Jehowa waxte ohoundapi qa eceñ unkokicipapi kta.

---

ka-ki	E-di-ja	wi-wa-zi-ca
kan-gi	i-yo-hi	un-han-ke-ta
he-ca	he-ce-ca	a-gu-ya-pi
wi-hdi	o-ton-we	o-hi-ni-yan
jan-jan	e-ha-ke	a-ki-ran-pi

## WOONSPE 12.

Sinkpe kin he kakeñ Oranpi.

Mdocketu ca maka maheñ ece tipi qa wanjik-xidan canañ peji oti yukanpi ece. Qa tohan ptanyetu aya ca hehan hinakaha canañ tipi kagapi kta e owasin peji yaxda ayapi qa witaya ahdiyu ayapi qa tohan tehanwankañ tanka kagapi ca hehan ake maheñtanhan yurdatapi qa yuxtanpi ca psa hutkan, cedi hutkan, hintkan hutkan, sinkpetawote hutkan psincinca, psinca, peji hutkan ko owasin qapi qa hena waniyetu ca yutapi cee.

Qa tohan waniyetu kta ca wicahmunkapi qa taku içihnipidan kta kex kohan iyuson awicayapi qa tohan ake waniyetu ca ake wicahmunkapi qa mini maheñ unpi kex yuson arpewicayapi cee.

Qa ake wetu ca kitan rin caga kin ikpardokapi qa caga kin akañ yukanpi qa peji ko horpiya xdayehna yukanpi kex mazakan on bowicasotapi cee. Sin'kpe kin he iyotan oran otapi tka oran kin ota sdonwaye xni.

sin-kpe

psin-ca

a-hdi-ju

hin-tkan

we-tu

a-ya-pi

ce-di

ki-tan

psin-cin-ca

hun-tkan

wi-ta-ya

hmun-ka-pi

## WOONSPE 13.

## Ptan kin.

Hehan ix ptan kin kakeñ oranpi. Tukteñ unpi ca eñ wakpa kin yukxankxankiya wanka kex optapta canku kagapi qa nakun mde wanji wakpa kin ireyata wanka kex ekta nakun canku iciya hdeyapi qa hena eceñ hogan, naxka tukihasan ko akitapi e cee.

Heceñ econpi kex canku kagapi kin huteḡ eñ mazartakiyapi eonpapi qa eñ ya kex nape kin siha kin wanji tukte kakex yuza ca kte e cee.

Qa hehan nakun reyatakiya canku kagapi kin ohna yapi kex mini itehanyan wanwicayakapi ca kuwa ewicayayapi ca nakaha arpekiciya napapi kex iyaza kata arpewicaya iyankapi cee.

Waniyetu ca eqe tokadan wicahmunkapi xni cee. Qa waniyetu ca ix sinkpe ti maheñ unpi kex xunkanyan unpi ca wica ktepi cee. Qa wa xma ca eqe wogan maheñ unpi nakaex tokadan wica ktepi xni cee. Ptan kin tukteñ unpi ca ninana peji yupanpanpi cee. He qe ti nicapidan onxiya unpidan.

ptan	ho-gan	i-ya-za
mde	hna-xka	i-yan-ka-pi
wa	wo-gan	e-on-pa-pi
xma	tu-kteñ	tu-ki-ha-san
kex	un-pi	ni-ca-pi-dan

---

WOONSPE 14.

Capa kin.

Capa kin he kakeñ oranpi. Mdoketu kin heñ tipi kagapi xni yakonpi qa tohan ptanyetu aya ca hehan hinakaha wakpa kin miniğ maheñtanhan maka qa ayapi cee, reyatakiya qa ayapi cee.

Qa tohan yuxtan ayapi ca kohan ake can yaksa ayapi qa maka qapi kin heñ ahdiyu ayapi cee. Can tankinkinyan yaksapi kex hena eqe okitpanipi nakaex akupi xni cee. Qa heceñ waniyetu ca hena yutapi cee. Qa hehan tohan wicahmun-kapi ca capa kin canku kagapi kin ohna mazartakiyapi kin eonpapi ca ohna can huwe ya kex nape kin siha kin uma tukte kakex yuza ca hecen kte ece.

Qa tohan waniyetu ca ake piya wica hmunkapi ca hehan caga nakaex. Caga kin maza wan on bordokapi qa mini maheñ tukte tuka kex owiran xni kex eñ yukxanyekiya can pazapi qa tatowapa tanhan e hanskeya pazapi qa okaga tanhan e pteceyeddan pazapi qa can wan ti maheñ tanhan tatowapatan ehdepi qa iyokaga tanhan ihukuya tanhan mazartakiyapi kin eonpapi ca can kin he yute kta eñ ya kex nape kin siha kin wanji tukte kakex yuza ca kte ece.

Capa kin maka on tipi kagapi tka waxicun ti iyecēñ tipi kagapi, nakun canku tankinkinyan kagapi.

---

ca-pa	ma-heñ	han-ske-ya
ka-keñ	yu-xtan	pte-ce-ye-dan
can-ku	a-ya-pi	bo-rdo-ka-pi
na-pe	re-ya-ta	e-on-pa-pi
si-ha	pa-za-pi	tan-kin-kin-yan
ca-ga	o-ka-ga	o-ki-tpa-ni-pi
ya-ksa	na-ka-ex	ma-za-rta-ki-ya-pi

---



## WOONSPE 15.

## Danie.

Babudon makoce qon wicaxta wan Danie eciyapi eñ un. Wicaxta okinihan qa anpetu iyohi yamni akihde Wakantanka cekiya cee. Hetanhan wicaxtayatapi kin wicaxta okinihan unpi ko owasin Wakantanka ohodapi xni qa cekiyapi xni. Can inyan ko e cekiyapi ece.

Iye taku cekiyapi kin Danie cekiye xni ce, unkan on caniyeyapi qa ktepi kte wacinyuzapi ce. Hecen mnaja tipi wan eñ e erpeyapi. Mnaja kin waxakapi rince ça orankoyedan wicaxta ktepi qa temyapi cee.

Danie eñ e erpeyapi kinhan mnaja kin yaru-rugapi kta nace ecinpi. Tuka Wakantanka mnaja kin i ohmuswicaya. Hanyetu osan Danie eñ wanka tuka mnaja kin ksuweyapi xni. Ihanrana

uncan wicaxtayatapi kin ekta i unkan Danie ni yanka wanyake ça ta oyate kin hewicakiya; Danie Wakantanka tawa kin kokipapo qa detanhan he ceyakiyapi kta.

Ba-bu-don	o-ki-ni-han	wa-cin-yu-za-pi
Da-ni-e	ce-ki-ya-pi	o-ran-ko-ye-dan
i-yo-hi	e-rpe-ya-pi	ya-ru-ru-ga-pi
a-ki-hde	wa-xa-ka-pi	wi-ca-xta-ya-ta-pi
he-tan-han	ksu-we-ya-pi	

---

WOONSPE 16.

Samue.

Wowapì wiconi kin eñ Samue oyakapi. Hokxidan cistina qehan hunku kin Wakantanka kiçu qa tipi wakan kin eñ unkiya. Waniyetu otoi-yohi hunku kin ekta wanhdag̃ i qa onrorda teca kai ece. Tuka Samue tipi wakan kin eñ wo-xnapi kage cin om un cee.

Hokxidan cistina tuka Wakantanka waxtedake ça cekiya kin eñ ece un cin. Hanyetu wan Samue ixtima wanka unkan Wakantanka eñ taku eciya. Samue wicoie kin naron tuka tuwe he

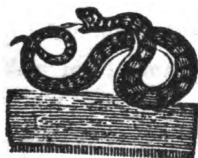
heye cin wanyake xni, on tokaheya kopehda  
tuka ocim anagoptan yanka.

Samue anagoptan yanka unkan Wakantanka  
tokeñ econ kte cin e wanjikxi eceñ okiyaka.  
He ehan wowapi wiconi kin apadan yuhapi, on  
Wakantanka atayedan takewicakiya cee. Dehan  
wowapi wiconi ocowasin unhapi qa on eciyatan-  
han ecedan taku unkekiciyapi ece.

Wowapi wiconi unyawapi eca Wakantanka  
om unkohdakapi ece. Qa tuwe tokeca wowapi  
kin he yawa nayaron eca Wakantanka he e iye  
ie se nayaron ece. He kiksuya wo.

---

Sa-mu-e	a-na-go-ptan	a-ta-ye-dan
on-ro-rda	o-co-wa-sin	to-ka-he-ya
i-xti-ma	o-ki-ya-ka	o-to-i-yo-hi



WOONSPE 17.

Wamduxka kin Yuwankañ Ehnakapi.  
Juda oyate kin Wakantanka mana ahinhewi-



caye ča yuñwicakiya ce epa. Hecēñ Wakan-  
tanka tanyan owicakiranye ča imnahan woyute  
waxte wica qu ce. Tuka unhandeta orinyanpi  
qa Wakantanka wihnupi. Tanyan ecawicakicon  
tuka ohodapi xni. Hecēñ wamduxka kin Wa-  
kantanka wica yartaḡwicakiye ča on wicota  
iapi.

Hehan hinakaha Mose okiyakapi. Wakan-  
tanka eñ xicaya econkupi ce eya wohdakapi  
qa Mose Wakantanka cewicakiciye kte cinpi.  
Hecēñ Mose cekiye ča Wakantanka ayupte ča  
heciya ; Mazazi heca on wamduxka wan kage  
ča can wanji ikoyaḡ ehde wo. Tona ekta eton-  
wanpi kinhan wicayartaka xta okizipi kta ce.  
Mose hecon unkan tona ekta etonwanpi eca  
okizipi ece.

Jesus Kris kakeñ eya ; Wamduxka Mose  
ynwankañ ehnahe cigon he imayacinpi qa tuwe  
ekta ematonwe cinhan niyanpi kta ce.

Taku xica econkupi kin heon Wakantanka  
kakixunyanpi kta tuka taku xica owasin erpeun-  
yanpi qa Cihintku wicaundapi qa anaungoptanpi  
kinhan nagi kin niunyanpi kta e he ka.

wa-mdu-xka	hi-na-ka-ha	e-con-ku-pi
i-mna-han	o-rin-yan-pi	ni-un-yan-pi
wo-yu-te	o-ki-zi-pi	e-rpe-un-yan-pi
yu-wan-kañ	wo-hda-kapi	Wi-hnu-pi
ta-wa-cin	e-ton-wan-pi	

---

WOONSPE 18.

Taku yutapi kin on wicani ce epe cinhan oyakarniḡe kta naceea. Anpetu topa zaptan taku yute xni yanka unkokhipi. Apa wikcemna can exta okhipi tuka terike a kitanyeñ nipi ce. Tuka anpetu wikcemna yamni hehanyan tuwe-dan okihixni nace. Taku yutapi kin on wicani epe cin he etanhan hepe. Eya qex epe cin hecetu.

Jesus waonspewicakiya unkan heya ; Aguyapi wiconi kin he miye ce. Tuwe ekta mahi eca ohiniyan wotektehda wanin un kta ce. Qa tuwe wicamada eca owihanke wanica ipuze kte xni ce.

He token ka e heya hwo ecani naceca. Tuwe wowapi wiconi nina yawa qa Wakantanka ohoda kin he inunge cinhan oniciyake kta ce. Iwanga wo ito.

non-pa	yu-ta-pi	i-wan-ga
to-pa	wi-kce-mna	i-nun-ga
za-ptan	wa-ni-ca	i-pu-za
mi-ye	he-ce-tu	na-ce-ca

---

### WOONSPE 19.

Tukteñ maka kicanyanpi xni eca wamnaheza aguyapi ko taku icage xni ce. Maka kin mdu xni qa peji hutkan kin suta rince, heceñ aguyapi qa wamnaheza eñ okadapi kex icage xni cee. Tuka tukteñ maka tanyan kicanyanpi peji hutkan kin owasin erpeyapi qa kamdupi qa eñ wojupi ca tanyan uya ce. Hecceñ ptanyetu kinhan wahuwapa waxtente yuksapi qa wicaxta winorinca xiceca ko owasin iyuxkinpi cee.

Wicatawacin kin he iyacinpi. Tawacin xicapi kin on xicaya oranyanpi ce. Taku waxte eñ icage xni. Maka kicanyanpi xni kin ix eya iyececa. He Wakantanka xicedake ca unkita-wacinpi kin teca unkagapi cin. Jesus Kris nakun nina cin. Unkitawacinpi kin eñ unqupi kinhan teca unkagapi kta qa on wicoran waxte econkupi kta, keya. Hecceñ Jesus Kris iyuxkin

kta ce. Qa tona Wakantanka waxtedapi ca hena iyuxkinpi kta. Unkix nakun unkiyuxkinpi kta. Tanyan yaun kta yacin he cinhan Jesus tawacin teca kida wo. Niçu kta ce. Econ kta e wiyeya yanka, keye.

---

pe-ji	ptan-ye-tu	wa-mna-he-za
su-ta	wo-ju-pi	wa-hu-wa-pa
hu-tkan	i-ca-ge	ki-can-yan-pi
Je-sus	i-yu-xkin	un-ka-ga-pi

---

#### WOONSPE 20.

Juda oyate kin etanhan wicaxtayatapi wan Nikodema eciyapi, hanyetu wan Jesus eñ i qa heciya ; Itancan taku ecanon kin on Wakantanka etanhan waonspekiya yahi e sdonunniyanpi ce. Woecon ecanon kin tuwedan okihi pica xni, Wakantanka kicica xni ehantanhan, eya. Unkan Jesus itkom heciya ; Wicaxta nonpa akihde tonpi xni ehantanhan Wakantanka ta oyate kin wanyake kte cin okihi pica kte xni. He tanyan yukcan wacin wo. Qa Jesus iye ta Wakunze on okarnirniye kta icekiya wo. Tancan kinhe ke xni ce.

Ju-da	a-hi-kde	Ni-ko-de-ma
Je-sus	o-ya-te	Wa-kan-tan-ka
ton-pi	wan-ya-ke	wa-on-spe-ki-ya
i-tkom	Wa-kun-ze	o-ka-rni-rni-ye

---

## WOONSPE 21.

Taku hiyeye cin owasin Wakantanka Jesus Kris Wakunze ko hena ecedan waonxidake ça wani kte kiyapi cinpi Wawacinkta yuzapi tanka. He etanhan Jesus Kris kakeñ eye ; Tiyopa owotana kin ohna ya po.

Wiconie aiyahdeya canku wanke cin e ohdakin-yan tanka qa tiyopa kin ix eya iyececa qa wicota eñ eyayapi ece. Wiconi aiyahdeya canku wanke cin e ciqayedan tiyopa nakun eistiyedan qa iyeyapi kin e tonanapidan. Canku tawa kin ieuom unkiyayapi kta rince se unyakonpi on heya.

Qa ikpatan canku kin he unkakitapi kta e he ka. He tanyan yukean wacin wo qa tiyopa cistiyedan icuom de kte xni wokitanyan wo qa nina icekiya wo. Wiconi canku kin nicipazo kta ce.

can-ku	hda-kin-yan	ci-qa-ye-dan
wan-ke	i-kpa-tan	ci-sti-ye-dan
tan-yan	i-cu-om	i-ye-ya-pi
yu-kcan	wi-co-ni	un-ya-kon-pi

---

## WOONSPE 22.

Jesus Kris tuwe kin iciwange cinhan Wakan-  
tanka Cihintku ce, ehe kta. Hecen tanyan waadu<sup>1</sup>  
pte kta. Jesus Kris he Wakantanka kin ce hecen  
maka can qa taku wanyaḡ yaun kin owasin iye  
kaga. Wowapi wiconi kin hecen unkekiciyapi.

Tuka he Jesus wicaxta nakun. Wana ehan-  
tanhan waniyetu kektopawinge nom iyokpani  
hehan maka kin akan hi qa eya hokxiyopa  
wiconpi cee qon iye ecen tonpi. Hokxipidan  
owasin tukteken xicaya oranyanpi. Hunr nina  
wicaxtapi xni cee. Tuka Jesus iyewicacece xni.  
Tohini taku xica econ xni un.

Hunkakewicaye cin waxtewicakidaka qa taku  
tokeñ econ xipi kin iyokipiya econ. Nakun  
tawacin ksapa. Waniyetu wikcemna ake nonpa  
wana hehan i unkan tipi wakan kin en wicaxta  
tanka om wohdaka qa wacin ksapa e nina kini-  
hanpi.

Kris	Ci-hin-tku	wa-ni-ye-tu
ksa pa	wo-wa-pi	e-han-tan-han
wa-cin	wi-co-ni	ho-kxi-pi-dan
tan-ka	wo-hda-ka	i-yo-ki-pi-ya
to-hi-ni	i-ci-wan-ge	ko-kto-pa-win-ge

---

### WOONSPE 23.

Wakantanka Cihintku maka akañ un qon ehañ xiceca cikcistinpidan waxtewicadaka. Hokxiyopa cistina heca wicakihna qa heceñ wicayawaxte. Ookiyewicaye cin hewicakiya; Wati kin marpiya heci yatipi yacinpi he cinhan hokxiyopa dena wacinyuzapi kin eceñ wacinyuza po. Hokxiyopa cikcistina kin hena waraniçidapi xni. Waranniçidake cinhan Jesus om yati kte xni.

Nisunka qa tuwe tokeca kex wacin eñ xicaya yakiduze cinhan tohan nite cinhan marpia ekta de kte cin oyakitpani. Heceñ Jesus eya ce. Hokxiyopa cistina kin atkuku hunku ko waxtewicakidapi qa token eyapi kin wicawicadapi ce. Wakantanka waxtedaka wo. Jesus Kris waxtedaka wo. Cekiya wo. Hecanon kinhan cante

teca niçu qa tohan niite cinhan marpiya ekta  
inicu kta ce.

---

de-na	ma-rpí-ya	o-o-ki-ye
te-ca	ci-sti-na	ci-kei-sti-na
can-te	ce-ki-ya	wa-cin-yu-za
to-han	ya-wa-xte	o-ki-tpa-ni
e-ya	a-tku-ku	wa-xte-da-ka

---

#### WOONSPE 24.

Jesus makata un qon ehan taku waxte kin  
hecedan opa. Wayazanka ota asniwicaye ça  
apa tapi kex ekicetuwicaya ce.

Ito wanji ociciyake kte do. Tanyan kiksuya  
wo. Hokxidan wan wake kta ce. Wiwazica  
wan cinca hecedan unkan ia. Wana rapi kta e  
ayapi unkan Jesus itkowicakipa. Hunku kin  
ihakam ceya u. Jesus itkowicakipa unkan eñ  
inajinpi. Hokxidan ia wanke cin Jesus eñ i qa  
yutan qa heciya; Ni wo. Hececa unkan ia  
wanke ciquon najin hiyaye. Heceneñ hunku kin  
pidaye, cihintku niye cin on. Jesus oran kin  
ota hececa wowapi wiconi eñ dawa kta.



a-sni	na-jin	pi-da-ye
a-pa	hun-ku	e-ki-ce-tu
o-pa	ma-ka-ta	wa-ya-zan-ka
ta-pi	he-ce-dan	i-na-jin-pi
ra-pi	a-ya-pi	wi-wa-zi-ca

---

## WOONSPE 25.

Ake Jesus Kris ociciyake kta. Wicaxta owasin woartani econpi qa on onxika içicagapi. Wakantanka he wanyaka unkan onxiwicadake ça woartani etanhan niunyanpi kta e Cihintku kin te u xi.

Jesus ix nakun onxiwicada wawacinkta yuze ça niunyanpi kta e tancan kin waihduxna. Ta unkan anpetu iciyamni ekicetu içicage ça hehan ake marpiya kin ekta kiyotanka. Dehan heci yanka ce.

Wowapi wiconi kin eñ kakeñ unkekiciyapi ; Tuwe waxtemada qa mita woahope iyokipiya ahope cinhan tawawaye kta ce. He atewaye cin waxtedake kta qa mix eya nakun waxtewadake kta ce. Tohan te cinhan nagi kin wati kin eñ iwacu kta ce. Qa heceñ nakun tancan kin

ekicetuwaye kta ce. Hecēñ nagi tancan ko  
owihanke waniñ wati kin eñ un kta. Heci  
takudan wacin iyokixica waniñ un kta qa  
wayazanke kte, xni qa owihanke waniñ ni un  
kta ce.

Wakantanka om yaun kta yaein he cinhan ito  
taku xica ecanon kin owasin ayuxtan qa Jesn s  
waxtedaka wo. Hena wicoie kin owasin tanyan  
kiksuya wo.

---

a-ke	wo-a-rta-ni	wa-i-hdu-xna
na-gi	i-ci-ca-ge	on-xi-wi-ca-da
tan-can	i-ci-ya-mni	ki-yo-tan-ka
wa-niñ	wo-a-ho-pe	i-yo-ki-pi-ya
i-cu	wa-ya-zan-ka	i-yo-ki-xi-ca

---

### WOONSPE 26.

#### Wiconte Oyake.

He ehake ociciyake kta. Tuwe te cin wan-  
daka he? Hunr tohan wicaxta wan ta eca maka  
maheñ rapi ece. Dakota hokxidan wanji ta kex  
tancan kin can akañ ehnapaki. Omani waun  
eca tuktekteñ heca wanmdaka ece.

Ikcewicaxta owasin nipi waxtedakapi qa tehan nipi kta cinpi ce qa te kta ikopapi. Taku xica e-conpi kin on ikopapi. Hokxidan wan ta kex tancan kin can akañ ehna-kapi ce epa. Tuka nagi kin eñ ehna-kapi xni ce. He qe ihnuhana Wakantanka yanke cin eñ i ece. Hokxidan xicaya oranyan un qa Wakantanka ohoda xni ehantanhan nagi kin Wakanxica yanke cin ekta ayapi ce qa eñ ohiniyan gu kta ce. Tuka hokxidan kin Jesus waxtedake ca cante teca icekiya ehantanhan ohiniyan Wakantanka om tanyan un kta.

Hokxipidan wicinyana ko wana tapi kta unkan ikopapi xni e wanwicamdaka ece. Jesus waxtedakapi qa Wakantanka ateyapi qa heyapi ; Wana wahde ca ate ti kin eñ ohiniyan waun kta. Wakantanka waxteyadaka ehantanhan nite kte cin ikoyapi kte xni.

Hehan amdaxtan ce.

Da-ko-ta	e-hna-ka-pi	o-ci-ci-ya-ka
o-ma-ni	o-hi-ni-yan	wan-wi-ca-mda-ka
wan-da-ka	wi-cin-ya-na	wa-xte-ya-da-ka
wi-con-ie	i-ko-pa-pi	i-kce-wi-ca-xta

# ODOWAN.

## 1.

Wanikiya eyapi kin  
Makata un qehan  
He token owicakiye  
Wanjidan kaketu :  
Wicaxta wan wayazanka  
Jesus en ihdoye  
Makat' erpeiçiyē çā  
Heya hoyekiye.

## 2.

Akisni wo ehe cinhan  
Heceñ amasni kte  
Yacin kinhan oyakihi  
Kitanyan cekiye.  
Jesus napeykiye çā  
Ecacicon kta ce  
Akisni wo eciciya  
Eya ; heceñ asni.

Unkix eya wicoxice  
 Unkaxakapi ce  
 Qa on unkitawacinpi  
 Unyazanpi ece  
 Tuka Wanikiya qon he  
 Waasniyañ te hi  
 Akex marpiya kin heci  
 Waonxida yanke.

Wanikiya ceciciya  
 Ahimatonwan wo  
 Mitawacin asnimayañ  
 Ionximada wo.  
 Apa wicaduwaxte kin  
 Tokin wanji miyeñ  
 Wakan waxte duhe cin he  
 Ionximada wo.

## WOONSPE 8.



*Tokawicayapi qon tawicapapi tuka mini  
kin aohdutewica qa owasin rin miniñ tapi.*