

Generated at Library of Congress on 2020-12-26 05:05 GMT / https://hdl.handle.net/2027/iau.31858049673159
Public Domain in the United States; Google-digitized / http://www.hathitrust.org/access_use#pd-us-google

BX
8957
.1656

Souvenir
of PRESBYTERIAN
IOWA



IN COMMEMORATION OF
THE 118TH GENERAL ASSEMBLY
IN DES MOINES, IOWA, MAY 17, 1906.

PUBLISHED BY SYNOD'S COMMITTEE ON THE GENERAL ASSEMBLY
UNDER DIRECTION OF REV. J. F. HINKHOUSE, SIOUX CITY

Generated at Library of Congress on 2020-12-26 05:05 GMT / https://hdl.handle.net/2027/iau.31858049673159
Public Domain in the United States; Google-digitized / http://www.hathitrust.org/access_use#pd-us-google

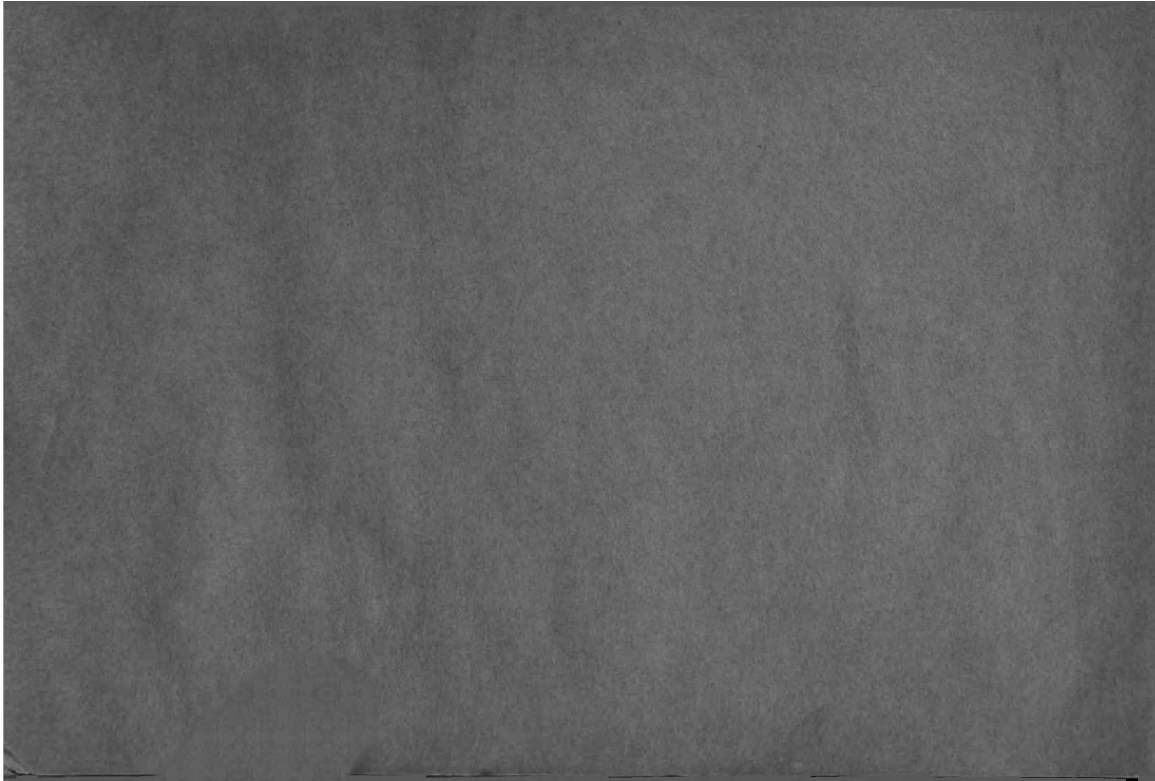
State
University
of Iowa
Libraries

957
S6

DATE DUE	
18 Jul 89	
16 Aug 89	
23 Aug 76	
27 Jul 90	
1 May 92	
NOV 16 2004	
GAYLORD	PRINTED IN U.S.A.

3 1858 049 673 159
 MAIN LIB Souvenir of Presbyterian Iowa in commemoration of Hinkhouse, J. F.
 BX8957.16 S6/.c.1

Generated at Library of Congress on 2020-12-26 05:05 GMT / https://hdl.handle.net/2027/iau.31858049673159
Public Domain in the United States; Google-digitized / http://www.hathitrust.org/access_use#pd-us-google



Souvenir of Presbyterian Iowa

Published in Commemoration of the 118th Meeting of the General Assembly in Des Moines, Iowa, May 17th, 1906.
By Order of Synod's Committee on the General Assembly, Under the Direction of Rev. J. F. Hinkhouse.

SYNOD'S COMMITTEE

REV. J. F. HINKHOUSE, Sioux City.

REV. S. R. FERGUSON, Cedar Rapids.

REV. C. H. PORTER, D. D., Des Moines.

T. D. FOSTER, Ottumwa.

C. W. BLACK, Malvern.

ASSISTED BY THE FOLLOWING PRESBYTERIAL COMMITTEES:

Cedar Rapids—Rev. J. W. Hubbard, Mt. Vernon; Rev. A. P. Cooper, Mechanicsville; Geo. B. Phelps, Clinton.

Corning—Rev. A. E. Kaser, Malvern; Rev. J. K. Driver, Villisca; Rev. E. B. Linn, Nodaway.

Council Bluffs—Rev. Harvey Hostetler, Council Bluffs; Rev. J. H. Carpenter, D. D., Marne; Rev. Samuel Conybeare, Audubon.

Des Moines—Rev. A. W. McConnell, D. D., Des Moines; Rev. R. F. Porter, Ph. D., Indianola; Rev. R. F. Chambers, Newton.

Dubuque—Rev. W. D. Ruston, D. D., Dubuque; Rev. D. W. Fahs, D. D., Independence; Hon. William Graham, J. L. D., Dubuque.

Fort Dodge—Rev. E. W. Brown, Spirit Lake; Rev. O. H. L. Mason, D. D., Boone; Rev. J. S. Corkey, Jefferson.

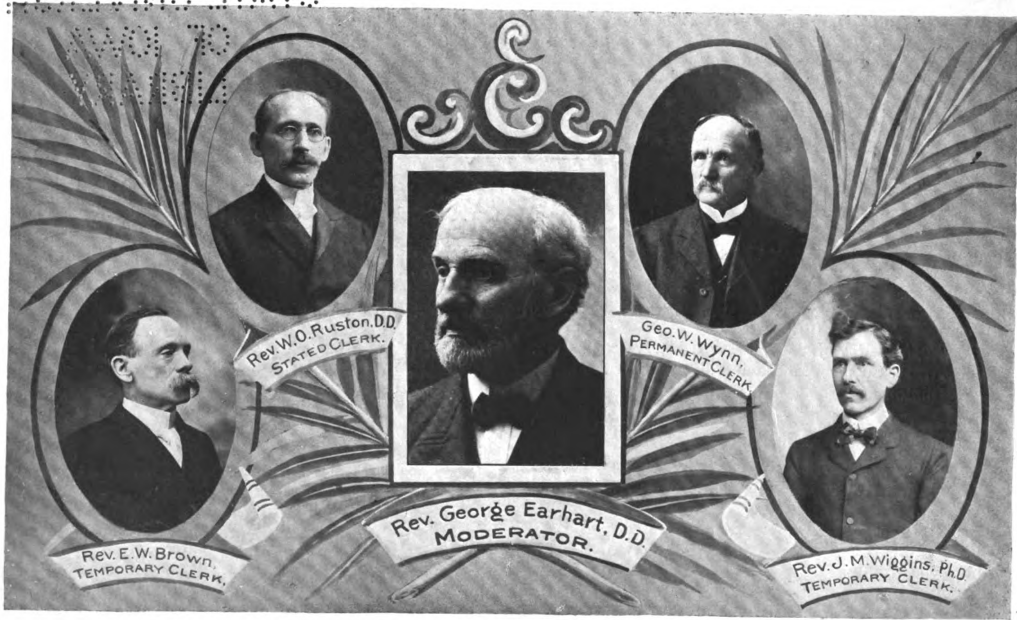
Iowa—Rev. W. P. Nicholas, Mt. Pleasant; Rev. W. E. Parsons, D. D., Fairfield; Rev. J. C. Wilson, Bloomfield.

Iowa City—Rev. N. A. McAulay, D. D., Wilton; Rev. J. B. Donaldson, D. D., Davenport; Rev. J. N. Elliott, Muscatine.

Sioux City—Rev. J. W. Counterline, Sac City; Rev. S. W. McFadden, D. D., Sioux City; Rev. H. V. Comin, Storm Lake.

Waterloo—Rev. Hugh McNinch, Ackley; Rev. C. H. Purnmort, D. D., Des Moines; Rev. W. B. Sanford, Waterloo.

118-1906-37



OFFICERS OF SYNOD.

1887
16.36

17 MAY 1888



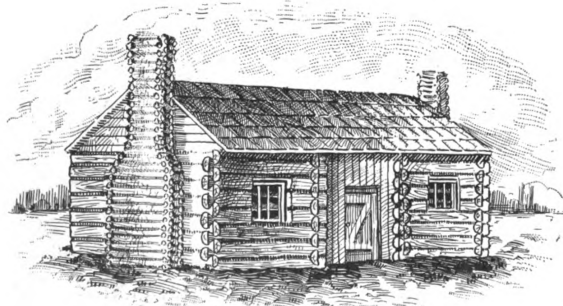
MEN WHO WERE INSTRUMENTAL IN SECURING THE ASSEMBLY FOR IOWA.

1. Rev. J. V. Findlay, Yorktown; 2. George Spence, Rolfe; 3. W. T. Cameron, Onslow; 4. Frank Graham, Clarksville; 5. H. W. Hovey, Independence; 6. Rev. W. C. Oseltow, Mollapolis; 7. Rev. C. S. McElhinny, Ph. D., Fairfield; 8. Rev. W. H. Jordan, Carroll; 9. A. B. Ross, Cherokee; 10. J. K. Montgomery, West Union; 11. J. N. Pressley, Grimes; 12. Rev. Hugh McNinch, Ackley; 13. Daniel Shannon, Kent; 14. Rev. J. W. Day, D. D., Des Moines; 15. James White, Lake City; 16. Rev. W. H. Roberts, D. D.; 17. Rev. Samuel Callen, D. D., Waterloo; 18. Rev. J. N. Elliott, Muscatine; 19. Rev. Jno. MacAllister, D. D., Missouri Valley; 20. E. O. Hyland, Casey; 21. Rev. J. Willard Counterline, Sioux City; 22. L. H. Lutz, Pl. Madison; 23. Rev. F. W. Engeske, Waukon; 24. Rev. R. H. Marquis, D. D., Writerset; 25. Rev. J. W. Innes, D. D., Monticello; 26. Rev. W. E. Ruston, Farley. Others who were not present when this picture was taken are: J. B. Johnson, Des Moines; Prof. S. W. Stookey, Cedar Rapids; Jas. Wilson, Hedrick; C. F. Thompson, Sioux City; Gilbert McDowell, Traer; Rev. G. I. Long, Cherokee; Rev. Chas. Memmott, Bellevue; W. S. Huston, Columbus Junction; Rev. R. E. S. Ely, Sr., D. D., Des Moines; Rev. H. H. Maynard, Phil. D., Cedar Rapids; Rev. F. W. Grossman, D. D., Hopkinton, and Rev. J. F. Hinkhouse, Sioux City.

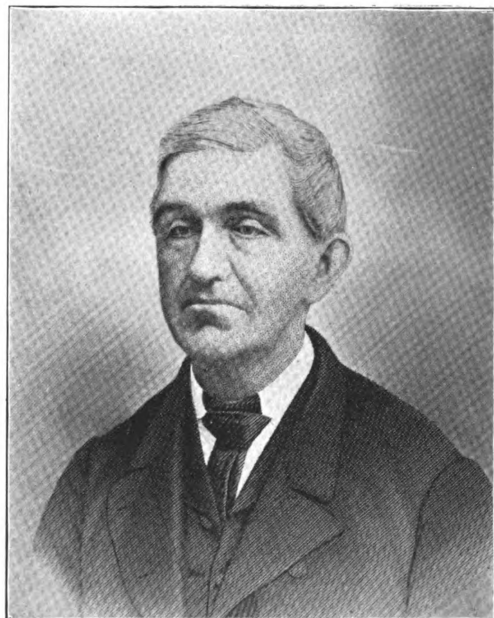
375646



AUDITORIUM. Place where Assembly meets.



HOUSE OF JOHN S. DEAN.
Where first religious service was held in Des Moines.



REV. THOMPSON BIRD.
First Presbyterian minister in Des Moines. Pastor of Central Church 1847-1864.



REV. C. H. PURMORT, D. D.,
Des Moines.



REV. S. R. FERGUSON,
Cedar Rapids.



REV. J. F. HINKHOUSE,
Sioux City.



C. W. BLACK,
Malvern.



T. D. FOSTER,
Ottumwa.

SYNOD'S COMMITTEE ON GENERAL ASSEMBLY.

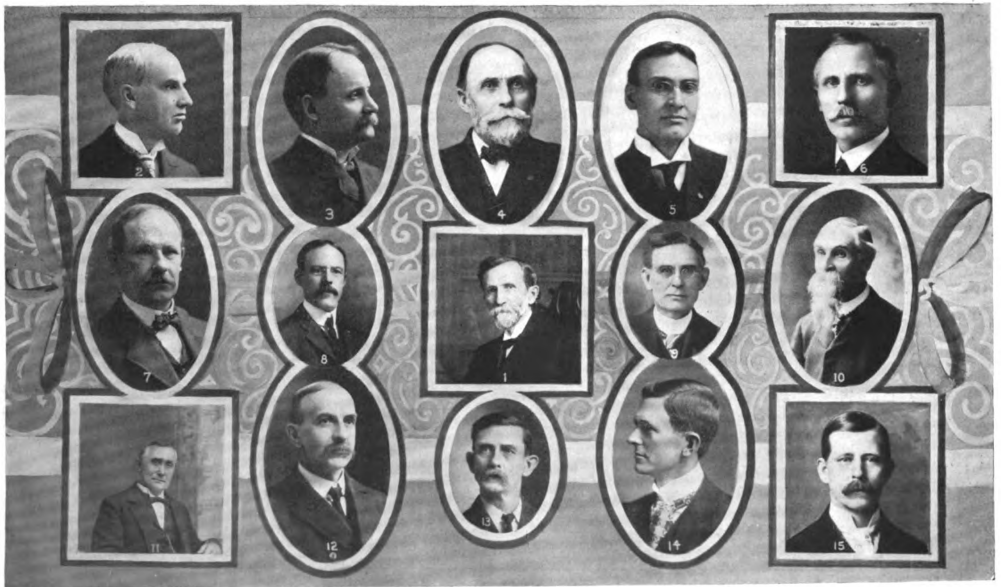


2. J. B. Johnson. 3. Rev. S. D. McFadden. 4. Wm. H. Roberts, D.D., LL.D. 5. D. B. Brown. 6. Rev. C. L. Reynolds
7. Rev. A. W. McConnell, D.D. 8. R. W. Marquis. 1. Rev. J. W. Day, D.D., Chairman. 9. C. A. Dudley. 10. W. B. Harrison.
11. J. A. Hosmer. 12. S. H. Sibley. 13. Rev. Murdoch McLeod. 14. Rev. W. B. Gage.

Generated at Library of Congress on 2020-12-26 05:05:05 GMT / https://hdl.handle.net/2027/iau.31858049673159
Public Domain in the United States; Google-digitized / http://www.hathitrust.org/access_use#pd-us-google



4. Rev. H. A. Leaty. 5. B. A. Lockwood. 1. Rev. Murdoch McLeod, Chairman. 6. H. A. Haas. 7. George Harnagle.
3. J. B. Johnson. 2. Reece Stuart, Secretary. 10. D. B. Brown. 9. T. E. Johns. 8. S. H. Sibley.



FINANCE COMMITTEE.

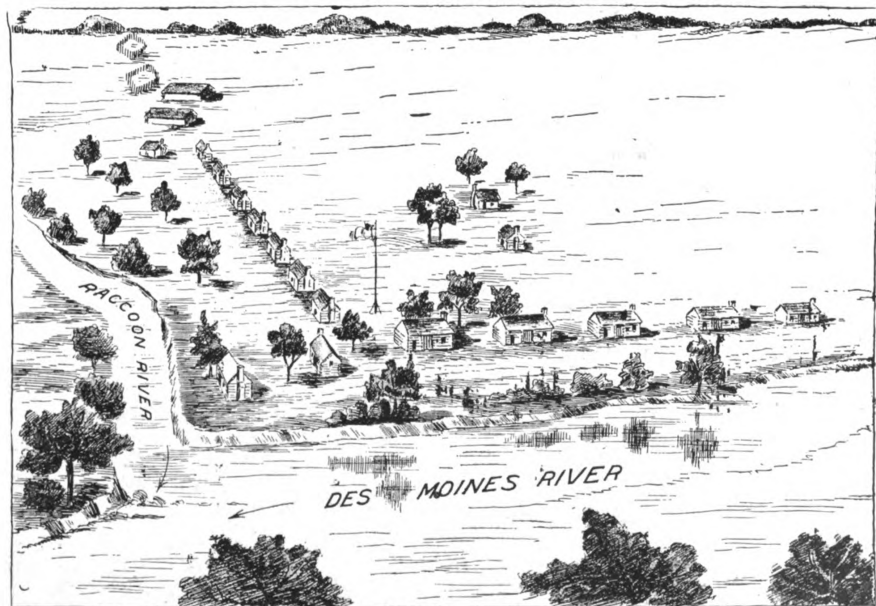
2. J. B. Johnson.
7. J. D. Whisenand.
11. R. W. Marquis.

3. W. W. Hale.
8. F. H. McArthur.
12. C. E. Risser, Secretary.

4. J. R. Dean.
1. C. A. Dudley, Chairman.
13. R. J. McKee.

5. L. D. Robinson.
9. A. M. Vance.
14. E. C. Musgrave.

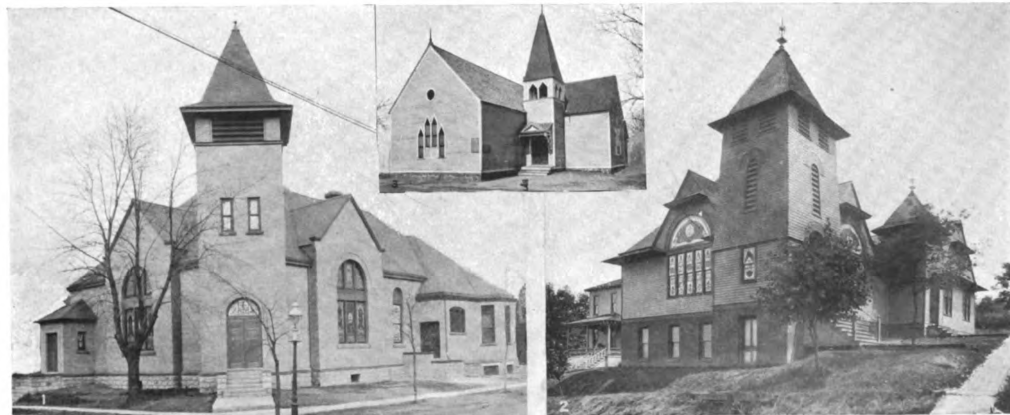
6. S. H. Sibley.
10. M. J. Southorn.
15. J. A. Hosmer.



DES MOINES IN 1844.



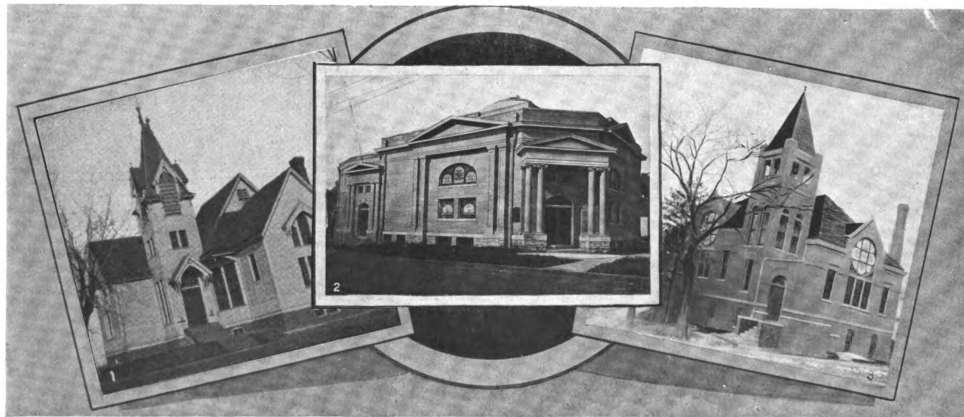
CENTRAL CHURCH, DES MOINES.



Westminster.

DES MOINES CHURCHES.
Bethany.

Clifton Heights.



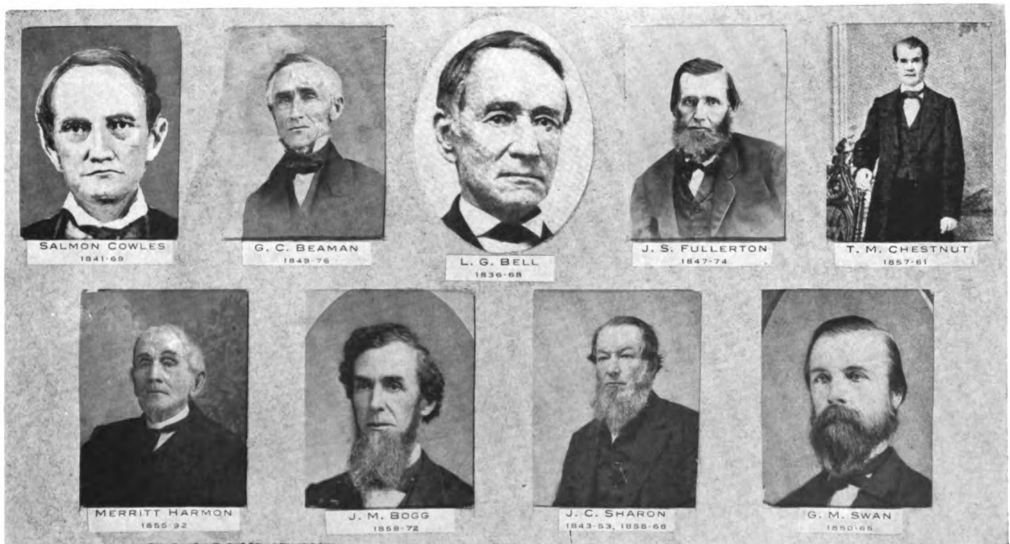
Highland Park.

First.

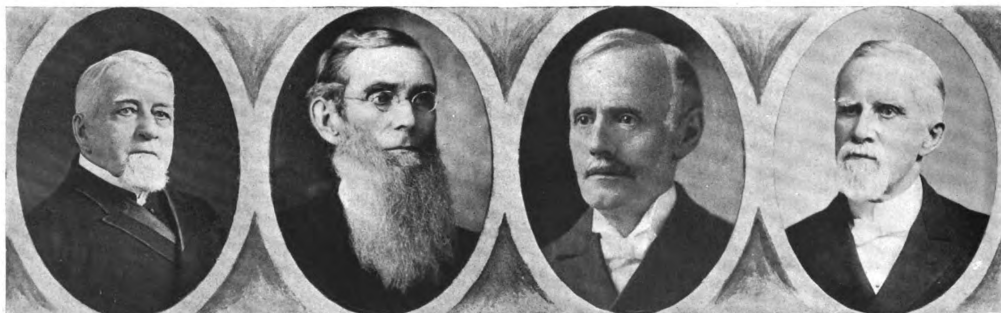
Sixth.

DES MOINES CHURCHES.

Generated at Library of Congress on 2020-12-26 05:05 GMT / https://hdl.handle.net/2027/iau.31858049673159
Public Domain in the United States; Google-digitized / http://www.hathitrust.org/access_use#pd-us-google



Figures indicate dates of ministry in Iowa. **SOME PIONEER MINISTERS.**

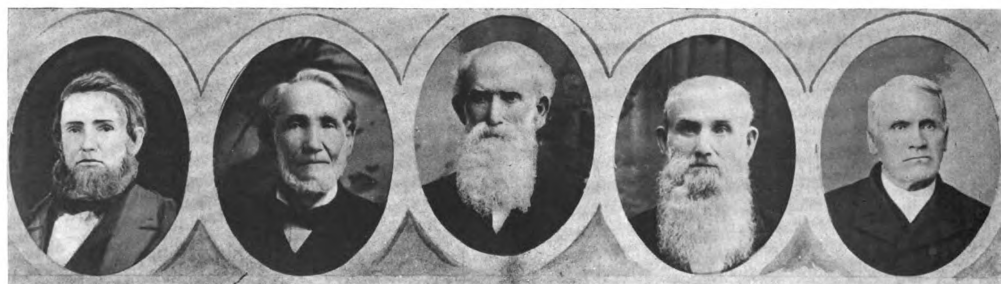


Geo. D. Stewart, 1861-70, 1877.—

J. M. McElroy, 1856.—

W. G. Craig, 1863.—

Stephen Phelps, 1863-1904.



J. C. Ewing, 1849-68.

F. B. Dinsmore, 1849-63.

T. H. Dinsmore, 1850-59.

J. M. Dinsmore, 1854-61.

J. P. Brengle, 1857-97.

Figures indicate dates of ministry in Iowa.

SOME PIONEER MINISTERS



SOME PIONEER MINISTERS.



SOME PIONEER CHURCHES.

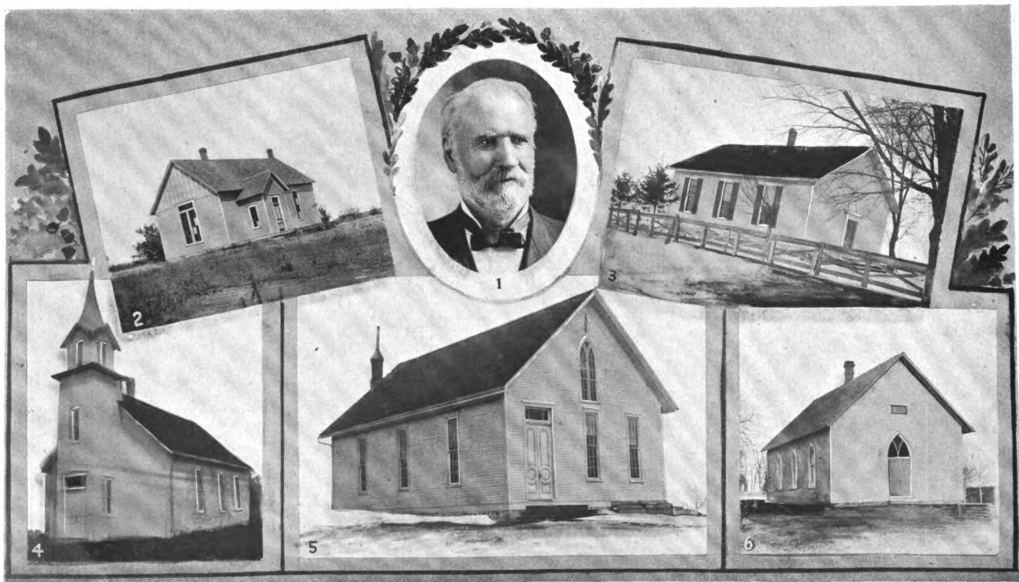


SOME PIONEER CHURCHES.

1. Burlington.
6. Council Bluffs, 1860.

2. Des Moines First, 1856.
4. West Point, 1861.
7. Dubuque First, 1858.

3. Sioux City, 1869.
5. Iowa City, 1845.
8. Ft. Dodge, 1856.



2 Prairie Chapel, Cornlng Presbytery.
4 Lone Star, Council Bluffs Presbytery.

COUNTRY CHURCHES.
5. Tranquility, Waterloo Presbytery.
HON. JAMES WILSON,
Secretary of Agriculture, long connected
with Tranquility Church.

3. Sugar Creek, Iowa City Presbytery.
6. Ridgedale, Des Moines Presbytery.



COUNTRY CHURCHES.

3. Hoprig, Ft. Dodge Presbytery.

1. Sharon, Iowa Presbytery.
4. Pilgrim, Sioux City Presbytery.

2. Scotch Grove, Cedar Rapids Presbytery.
5. Pine Creek, Dubuque Presbytery.



1. Williams, Waterloo Presbytery.
4. Woodbine, Council Bluffs Presbytery.

VILLAGE CHURCHES.
2. Grimes, Des Moines Presbytery.

3. Medinapolis, Iowa Presbytery.
5. Hawarden, Sioux City Presbytery.

Generated at Library of Congress on 2020-12-26 05:05 GMT / https://hdl.handle.net/2027/iau.31858049673159
Public Domain in the United States; Google-digitized / http://www.hathitrust.org/access_use#pd-us-google



Hopkinton, Dubuque Presbytery.



Churdan, Ft. Dodge Presbytery.



Malvern, Corning Presbytery.

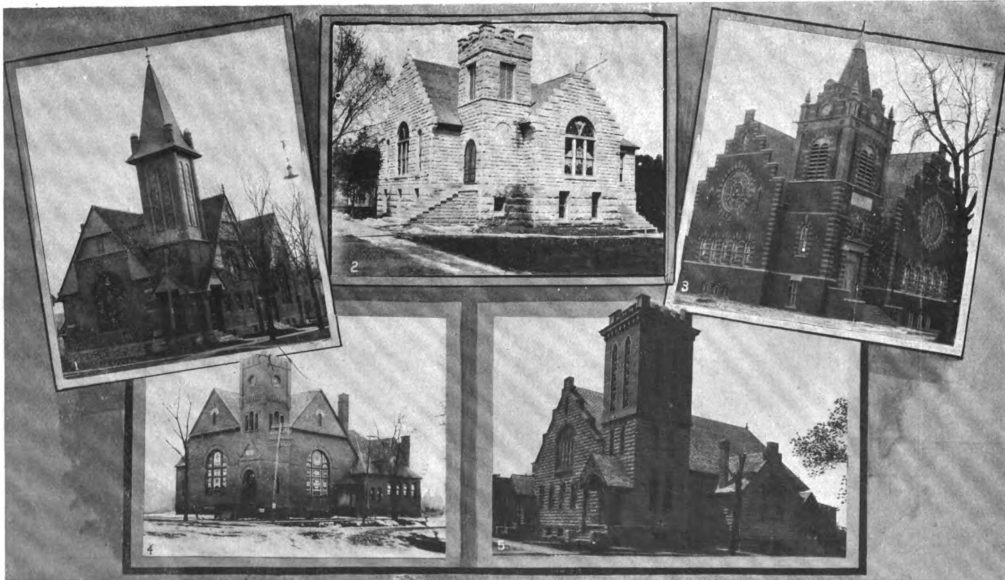
VILLAGE CHURCHES.



Wilton, Iowa City Presbytery.



Monticello, Cedar Rapids Presbytery.



1. Washington, Iowa City Presbytery.
4. Audubon, Council Bluffs Presbytery.

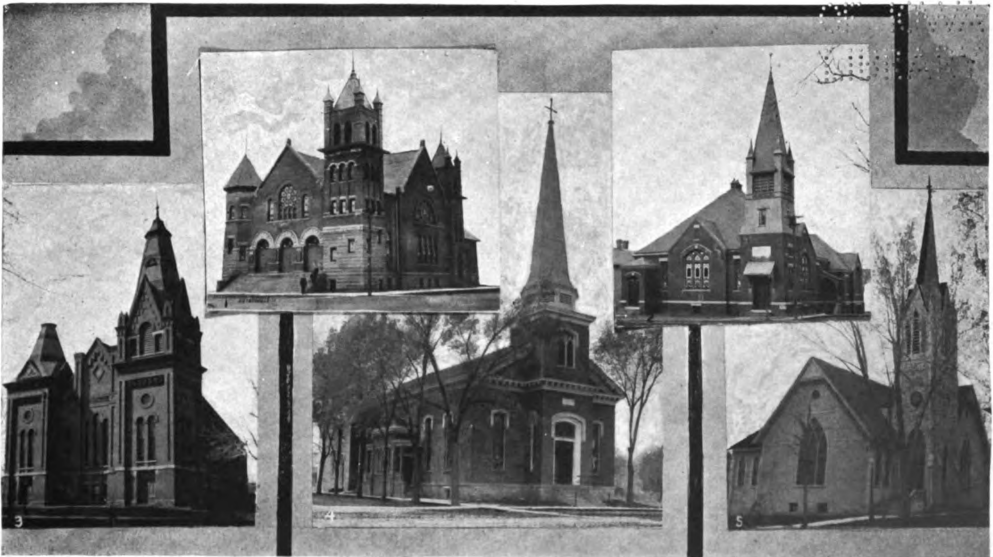
COUNTY SEAT CHURCHES.
2. Anamosa, Cedar Rapids Presbytery.

3. Indianola, Des Moines Presbytery.
5. Toledo, Waterloo Presbytery.

Generated at Library of Congress on 2020-12-26 05:05:05 GMT / https://hdl.handle.net/2027/iau.31858049673159
Public Domain in the United States; Google-digitized / http://www.hathitrust.org/access_use#pd-us-google

375646

STATE UNIVERSITY



1. Estherville, Ft. Dodge Presbytery.
3. Fairfield, Iowa Presbytery.

COUNTY SEAT CHURCHES.

4. Independence, Dubuque Presbytery.

2. Bedford, Corning Presbytery.
5. LeMars, Sioux City Presbytery.

Public Domain in the United States; Google-digitized / http://www.hathitrust.org/access_use#pd-us-google
Generated at Library of Congress on 2020-12-26 05:05 GMT / https://hdl.handle.net/2027/ia31858049673159

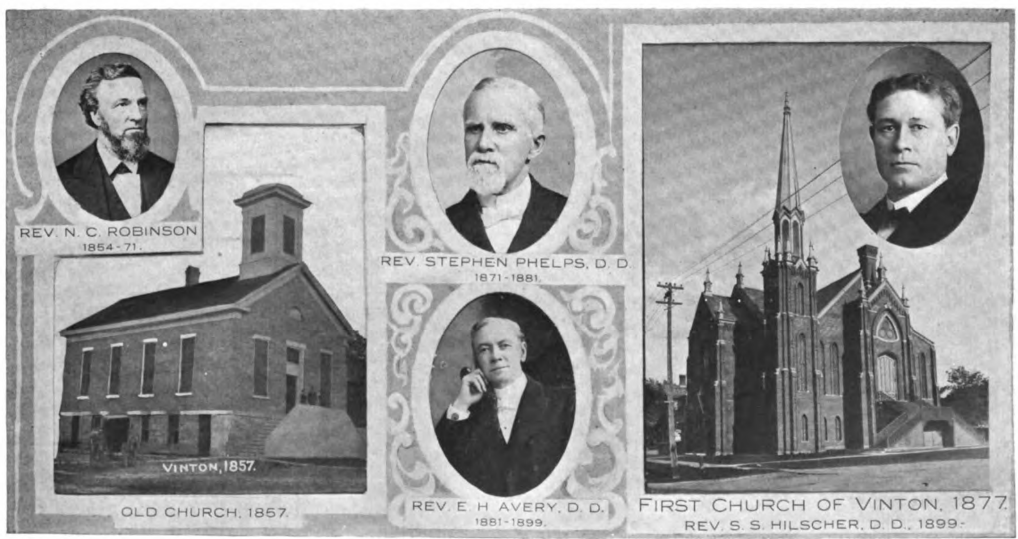
STATE UNIVERSITY



STATED CLERKS OF PRESBYTERIES.

1. Rev. N. A. McAulay, D. D., Iowa City; 2. Rev. J. W. Counterpane, Sioux City; 3. Rev. Harvey Hostetler, Council Bluffs; 4. Rev. J. W. Hubbard, Cedar Rapids; 5. Rev. W. L. Nicholas, Iowa; 6. Rev. A. E. Kiser, Corning; 7. Rev. Hugh McNichol, Waterloo; 8. Rev. A. W. McConnell, D.D., Des Moines; 9. Rev. E. W. Brown, Ft. Dodge; 10. Rev. W. O. Ruston, D. D., Dubuque.

Generated at Library of Congress on 2020-12-26 05:05 GMT / https://hdl.handle.net/2027/iau.31858049673159
Public Domain in the United States; Google-digitized / http://www.hathitrust.org/access_use#pd-us-google





DAVENPORT CHURCH, Where Society Was Organized.



2. MRS. J. F. YOUNG, Secretary 1875-89. 1. MRS. J. F. ELY, President 1875-78.
3. MRS. ALEX. SCOTT, Secretary 1875-92.

PIONEER OFFICERS OF SYNODICAL WOMAN'S MISSIONARY SOCIETY.

The Woman's Synodical Society of Missions was organized at Davenport, October 22, 1875. Prior to that date, the various women's societies had given the Board of the North-West \$4,809.01. Since that date they have contributed to this board \$209,594.95 or a total of \$214,403.96.
In October, 1884, at Cedar Rapids the Synodical Home Missionary Society was organized. The women of this state had given to this cause prior to that date \$2,968.80. Since then they have given \$135,062.10. In addition they have given Freedmen \$35,661.77. They have also been given credit for "Boxes" valued at \$17,000 a total of \$187,723.87.



SOME PIONEER OFFICERS OF WOMAN'S SYNODICAL MISSIONARY SOCIETY.

1. Mrs. E. H. Avery, President F. M. Society, 1890-1898. 2. Mrs. F. M. Riley, Secretary H. M. Society, 1898-1902. 3. Mrs. D. W. C. Rowley, President F. M. Society, 1880-1890; Secretary F. M. Society, 1892-1898. 4. Mrs. E. N. Barrett, President H. M. Society, 1884-1906. 5. Mrs. J. E. Boynton, Secretary H. M. Society, 1882-1884. 6. Mrs. A. L. Wells, Secretary F. M. Society, 1898-1902. 7. Mrs. J. S. Oliver, President F. M. Society, 1878-1880.



OFFICERS OF WOMAN'S SYNODICAL SOCIETY OF HOME MISSIONS.

- | | | |
|---|---|--|
| 2. MRS. J. P. ENGSTROM,
Secretary of Literature. | 1. MRS. C. W. COLEMAN,
President. | 3. MRS. JOHN MacALLISTER,
Secretary of Young People's Work. |
| 4. MISS MARTHA HORNISH,
Corresponding Secretary. | 5. MRS. O. E. KING,
Recording Secretary. | 6. MRS. C. F. ENSIGN,
Vice-President. |



MRS. DANIEL WILLIAMS,
Secretary of Literature.



MRS. ORR LAWSON,
Vice President.



MRS. J. C. McCLINTOCK,
President.



MRS. J. W. INNES,
Secretary and Treasurer.



MRS. C. E. RISSER,
Secretary Y. P. Work.

**OFFICERS OF WOMAN'S SYNODICAL SOCIETY
OF FOREIGN MISSIONS.**



1. Rev. E. A. Enders, Malpurie, India.
2. Mrs. E. A. Enders, Malpurie, India.
3. Mrs. Marion Nivling-Madeley, Japan.
6. Rev. Hugh Taylor, D. D., Lakawn, Laos.

A GROUP OF IOWA FOREIGN MISSIONARIES.

7. Rev. Malbone Graham, Colombia, S. A.
8. Rev. J. Milton Greene, D. D., Havana, Cuba.

4. Rev. E. W. Koons, Pyeng Yang, Korea.
5. Mrs. E. W. Koons, Pyeng Yang, Korea.
9. Rev. C. E. Rath, Tacloban, P. I.
10. Rev. J. H. Nicol, Tripoli, Syria.

Generated at Library of Congress on 2020-12-26 05:05 GMT / https://hdl.handle.net/2027/iau.31858049673159 / http://www.hathitrust.org/access_use#pd-us-google
Public Domain in the United States; Google-digitized



Rev. S. F. Moore,
Seoul, Korea.



Mrs. S. F. Moore,
Seoul, Korea.



Mrs. Lillian Fisher,
Carlo, Japan.



Mrs. Loretta C. Van Hook,
Tabriz, Persia.



Mrs. D. A. Murray,
Yamaguchi, Japan.



Rev. D. A. Murray, D. D.,
Yamaguchi, Japan.



Miss Mary Jewett,
Tabriz, Persia.



Miss Mary E. Pratt,
Ambala, India.



Miss Eleanor Chesnut, M. D.,
Martyr of Lien Chou, China.



Mrs. Elsie Sinclair-Hodge,
Martyr of Paoting Fu, China.

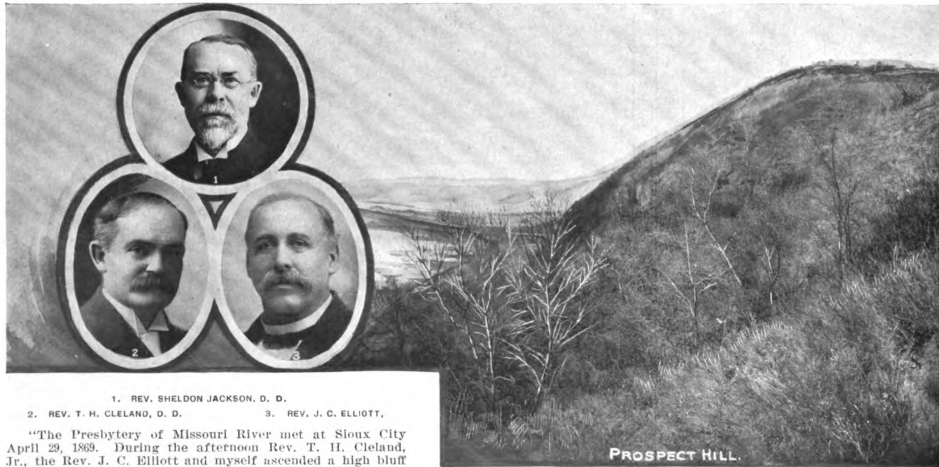


Mrs. J. C. Melrose,
Hainan, China.



H. C. Whiting, M. D.,
Pyeng Yang, Korea.

SOME IOWA FOREIGN MISSIONARIES.



1. REV. SHELDON JACKSON, D. D.
2. REV. T. H. CLELAND, D. D. 3. REV. J. C. ELLIOTT.

"The Presbytery of Missouri River met at Sioux City April 29, 1869. During the afternoon Rev. T. H. Cleland, Jr., the Rev. J. C. Elliott and myself ascended a high bluff on the edge of the city. From the summit was visible portions of Iowa, Dakota and Nebraska. With our hearts full of the contemplated action of Presbytery to appoint a general missionary for the regions beyond, our conversation was also on that subject. We were overwhelmed by our emotions as the Holy Spirit opened our eyes to see somewhat the extent of the spiritual desolations, and falling upon our knees we gave expression to our emotions in strong words, crying for divine help, and strength, and self-denial, and consecration—for faith to believe that the all-conquering Cross would yet triumph over those desolations."—Dr. Sheldon Jackson, in an address before the Synod of Iowa, October, 1905, on "The Iowa Movement."

Plans are maturing for the erection of a monument to commemorate this Prayer Meeting.

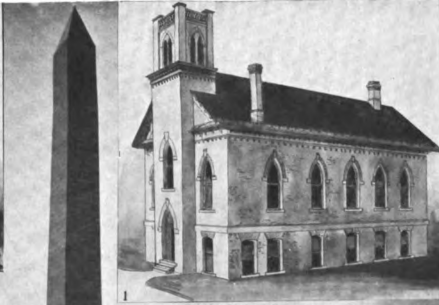
"Little did those five devoted young men at Williams College realize what would spring out of the Hay-stack prayer meeting for the cause of Foreign Missions, and as little did we three men realize how great a territory we were then dedicating to our King.

My settlement at Council Bluffs as my first pastorate in August 16, 1866, for a period of sixteen years was entirely providential. I had nothing to do about it but to follow the cloudy pillar

It was on my 24th birthday that I was ordained by the Presbytery of Missouri River in 1867, and was that day made chairman of the Home Missions committee of the Presbytery of Missouri River, whose territory extended from Des Moines to Sacramento and from the Canadian border to Mexico. I remonstrated at such a responsibility, but was overruled. From this time until the organization of the Synod of Nebraska my church was the outfitting place for the western pioneer. So much of my time was taken for this work that I often had only the Saturday to prepare my morning sermon for my Council Bluffs congregation. I was founding and dedicating a church every other month in the year.



2. CHURCH AT SIOUX CITY.



1. CHURCH AT COUNCIL BLUFFS.



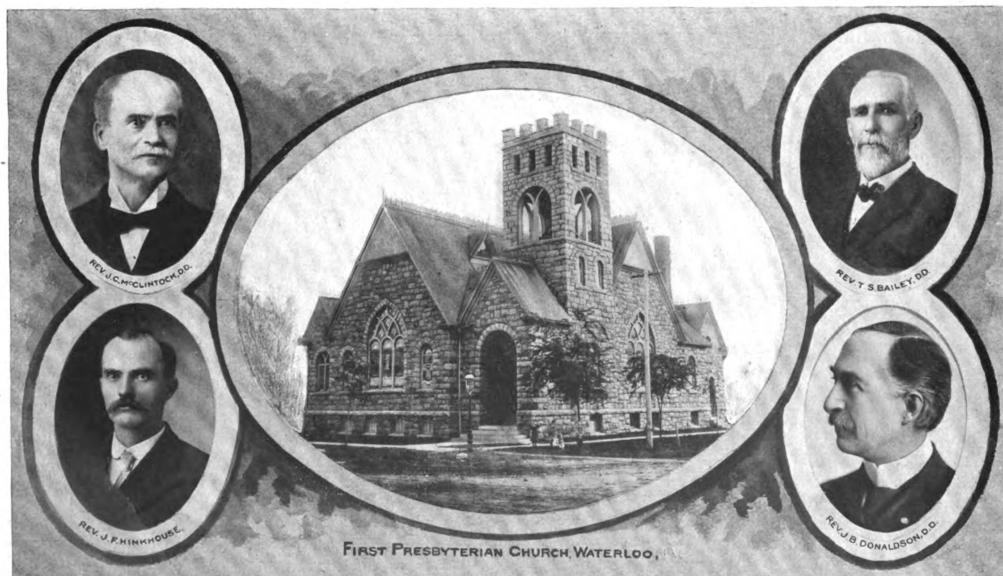
FLOYD MONUMENT.

This monument, at Sioux City, marks the burial place of Sergeant Floyd of the Lewis and Clark Expedition.

At length came the meeting of the Presbytery, April 29 to May 1, 1869, at Sioux City, in the little plain white house of worship. The burden of our discussion and prayer was the opening of a vast territory westward by the completion of the Union Pacific railroad, and ways and means of obtaining money to send the missionary to these pioneer settlements. The Lord seemed to hear our prayer and sent us that devoted hero of Christ, Rev. Sheldon Jackson. His heart was full of missions and his faith gigantic. He told us he would storm the east and get us the funds the Domestic Board was refusing us.

So Rev. Sheldon Jackson, of Minnesota, and Rev. A. C. Elliot, of Nebraska City, Neb., joined me, a representative of Iowa, in a walk to Prospect Hill, talking by the way, and our hearts burning within us as we talked by the way, when we determined to seek Divine guidance and as we knelt on that elevated point of land, looked toward Dakota, Minnesota, Iowa, Nebraska and the far west, we dedicated ourselves to the task of possessing that fat land for Christ and our beloved Presbyterians.

T. H. CLELAND.



The question of self support in Iowa Home Mission work was a momentous one. It was decided by Synod meeting in Waterloo, October 17th, 1902. The report recommending it was read by Rev. J. B. Donaldson, D. D. After discussion was ended the moderator, Rev. J. F. Hinckhouse, called on Rev. T. S. Bailey, D. D., for sixteen years Superintendent of Iowa Home Missions, to lead Synod in prayer. When the vote was made unanimous, Rev. J. C. McClintock, D. D., the Stated Clerk and first Treasurer of the Home Mission Fund, led Synod in singing "Onward Christian Soldiers."



BOARD OF IOWA PRESBYTERIAN HOME MISSIONS.

- | | | | | |
|------------------------------|-----------------------------|-------------------------------|--------------------------|-----------------------------|
| 1. Rev. E. E. Hastings, D.D. | 2. Rev. E. B. Newcomb, D.D. | 3. Rev. W. M. Evans, D.D. | 4. C. A. Benton. | 5. W. B. Harrison. |
| 6. Rev. J. N. Elliott. | 7. Rev. J. P. Linn. | 13. Rev. J. M. Ross, D.D. | 9. John Rath. | 10. Rev. Harvey Hostetter. |
| 11. Rev. C. H. Parmort, D.D. | 12. Rev. P. C. Baird, D.D. | 8. Rev. J. B. Donaldson, D.D. | 14. Rev. J. W. Day, D.D. | 15. Rev. W. O. Ruston, D.D. |
- Synodical Superintendent. Chairman.

Generated at Library of Congress on 2020-12-26 05:05 GMT / https://hdl.handle.net/2027/iau.31858049673159
Public Domain in the United States; Google-digitized / http://www.hathitrust.org/access_use#pd-us-google



CAPT. A. R. O'BRIEN.
Presbyterial S. S. Missionary.



UNITY, NEAR WINTHROP.



ALGONA.



PARALTA.



OTTERVILLE.

CHURCHES DEVELOPED BY SUNDAY SCHOOL MISSIONS.

SUMMARY OF THIRTEEN YEARS OF SABBATH SCHOOL WORK—Sabbath Schools organized, 561; Teachers, 2,058; Scholars, 20,404; Professed conversions in meetings held by Missionaries, 4,427; Number who united with the Presbyterian Church, 3,199; Number of Presbyterian Churches that developed from the work, 46; Value of property owned by these organizations, \$80,000.



2. STOUT.
5. NEMAHA.
6. UNITY.

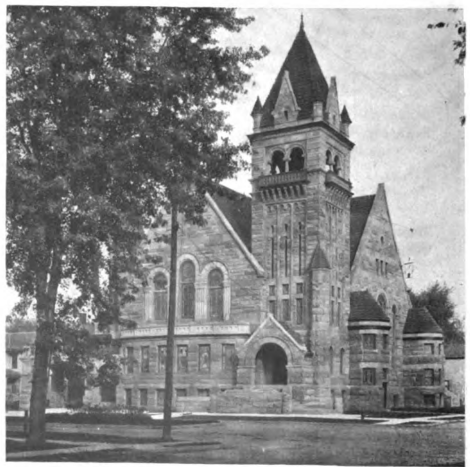
CHURCHES DEVELOPED BY SUNDAY SCHOOL MISSIONS.

1. Rev. S. R. Ferguson,
Superintendent of Iowa Sunday School Missions for
Thirteen Years.

3. CASTLE GROVE.
7. HALFA.
8. CONO CENTER.



Former Places of Worship.



Present Temple.

EVOLUTION OF THE DAVENPORT CHURCH.



3. MAIN BUILDING.

CORNING ACADEMY.

4. PRESIDENT'S HOUSE.

1. REV. T. D. EWING, D.D., President, 1889-1905.

2. F. H. CURRENS, A. B., President, 1905-.

5. GIRLS' DORMITORY.

Generated at Library of Congress on 2020-12-26 05:05 GMT / https://hdl.handle.net/2027/iau.31858049673159 / http://www.hathitrust.org/access_use#pd-us-google
Public Domain in the United States; Google-digitized



REV. E. E. REED, D.D., President, 1900—



WINNERS OF BRADFORD PRIZE
DEBATE CUP.



ORCHESTRA.



LADIES' HALL.



PRESIDENT'S HOUSE.

BUENA VISTA COLLEGE, STORM LAKE. FOUNDED 1891.

Generated at Library of Congress on 2020-12-26 05:05 GMT / https://hdl.handle.net/2027/iau.31858049673159
Public Domain in the United States; Google-digitized / http://www.hathitrust.org/access_use#pd-us-google



MAIN BUILDING.

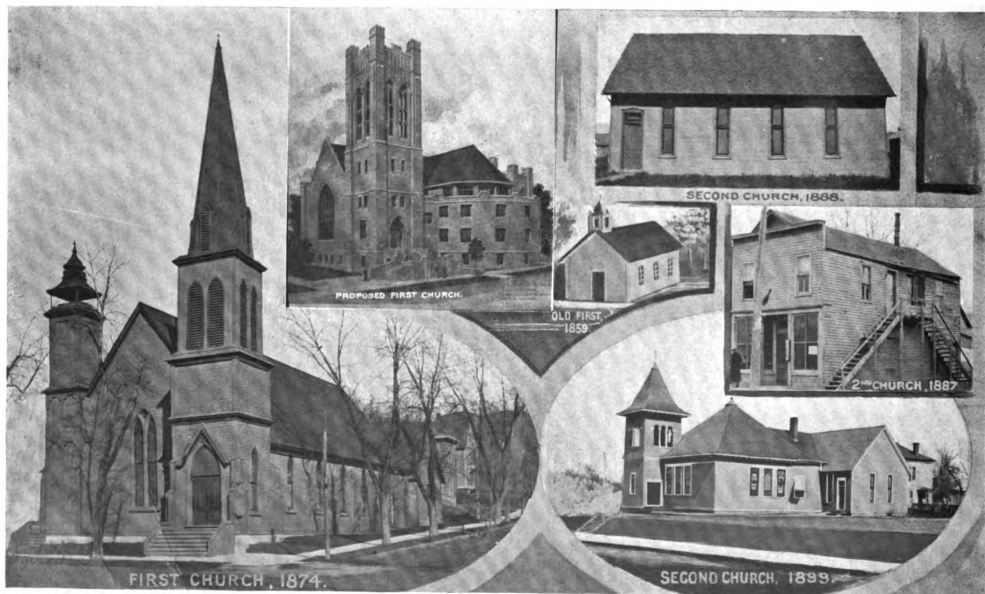


MUSIC HALL.



Winter Sport at Buena Vista.

BUENA VISTA COLLEGE, STORM LAKE. FOUNDED 1891.



SIoux CITY CHURCHES.



SIoux CITY CHURCHES.



MAIN BUILDING.



GYMNASIUM.



Campus View.

COE COLLEGE, CEDAR RAPIDS. INCORPORATED 1881.

Generated at Library of Congress on 2020-12-26 05:05 GMT / https://hdl.handle.net/2027/iau.31858049673159
Public Domain in the United States; Google-digitized / http://www.hathitrust.org/access_use#pd-us-google



WILLIAM WILBERFORCE SMITH, L.L. D.,
President, 1906-.



MARSHALL HALL
Academy.

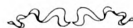


Y. M. C. A. CABINET.



CLASS SCENE.

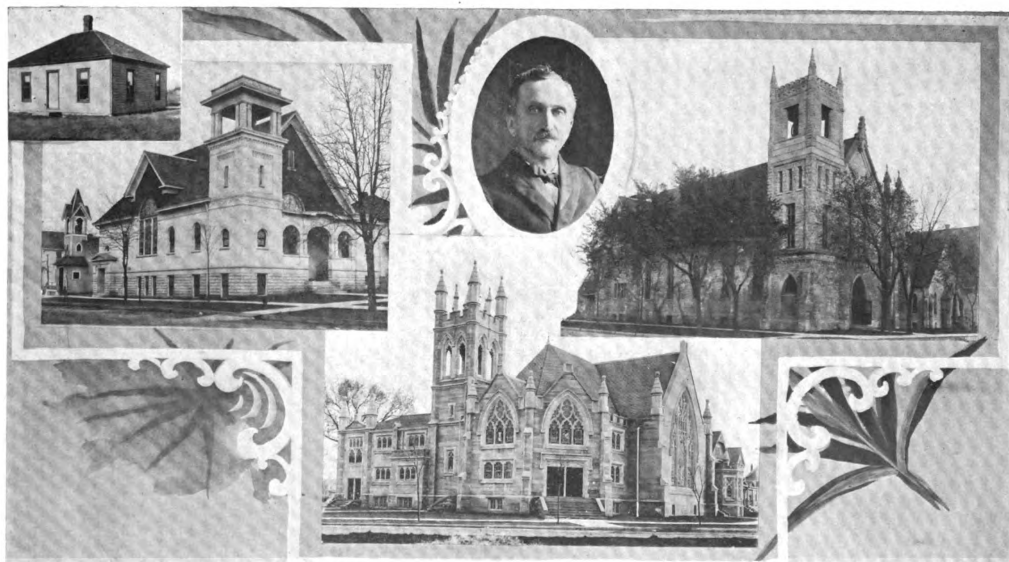
COE COLLEGE, CEDAR RAPIDS, INCORPORATED 1881.



The roots of this College run back to the days of Rev. Williston Jones, 1849. Mr. Carnegie recently provided the school \$45,000 for a Science Hall on condition that a like amount is raised for additional endowment.



WILLISTON HALL.

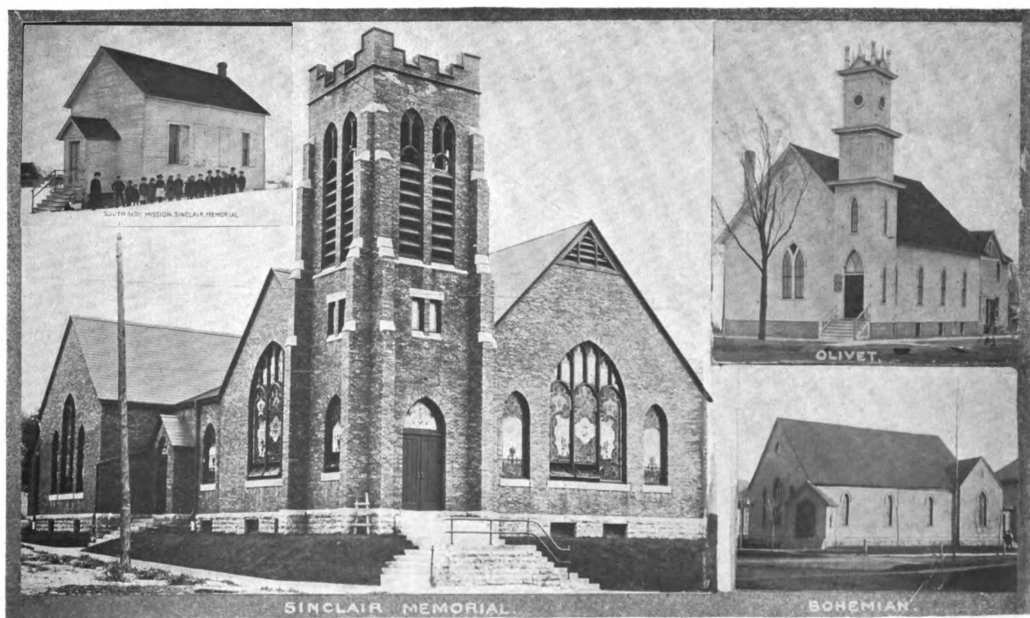


Mission of Central Park.
Central Park.

CEDAR RAPIDS CHURCHES.
Rev. E. R. Burkhalter, D. D., Pastor of First Church since 1876.
Westminster.

First.

Chapel.



CEDAR RAPIDS CHURCHES.

Generated at Library of Congress on 2020-12-26 05:05 GMT / https://hdl.handle.net/2027/ia31858049673159 / http://www.hathitrust.org/access_use#pd-us-google
Public Domain in the United States; Google-digitized



Rev. F. W. Grossman, D. D.,
President, 1902-.



CLARKE HALL.

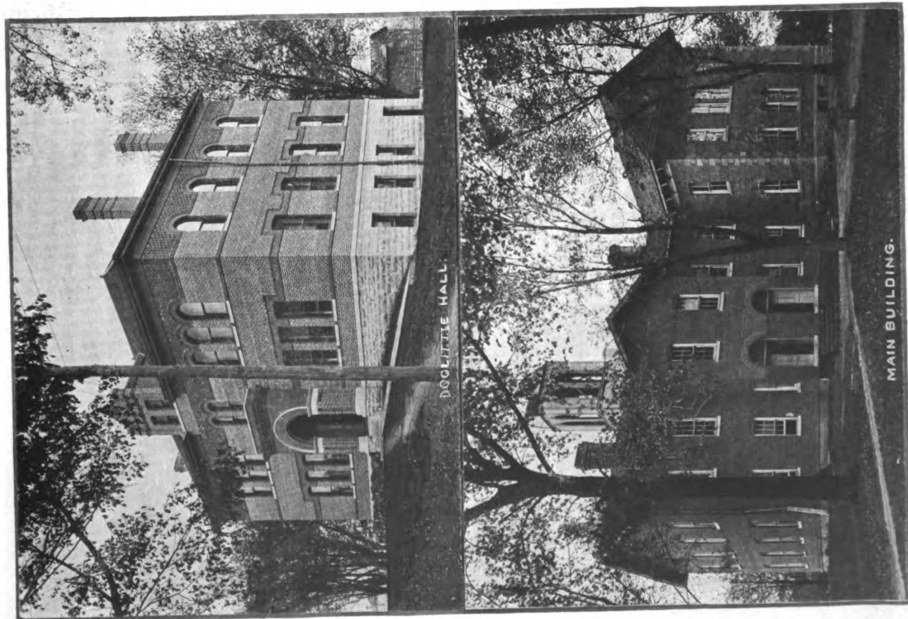


THE MONUMENT.
Erected in honor of President Rev.
J. M. McKean and 94 students who
enlisted in the Union army of the
Civil war.

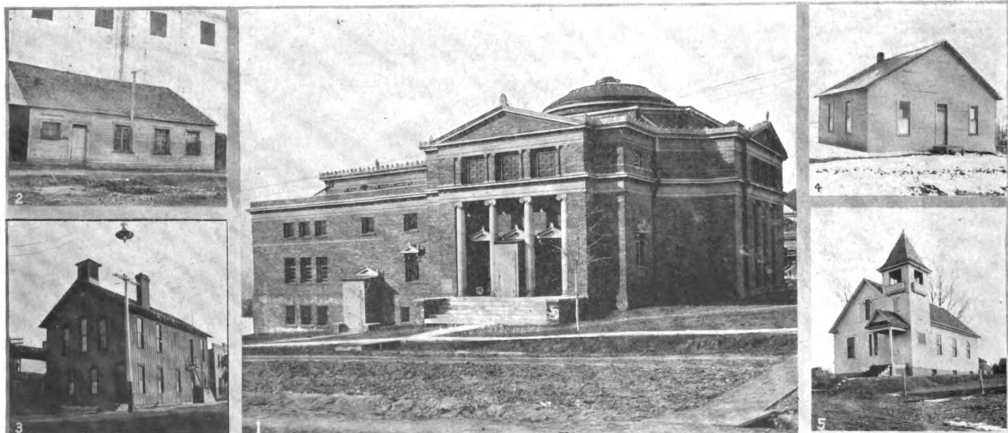


LENOX COLLEGE, HOPKINTON. INCORPORATED 1856.

View of Campus.



LENOX COLLEGE HOPKINTON, INCORPORATED 1856.



First Building Used, 1884.
Second Building Used, 1885.

OTTUMWA CHURCHES.
East End, Built 1901.

High Point Chapel, 1904.
River View Mission, 1905.



WEST END CHURCH.



FIRST CHURCH.

FIRST BUILDING.

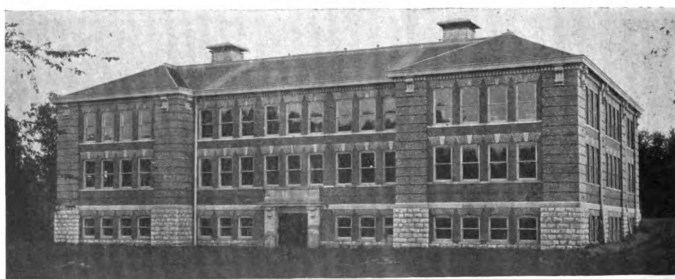
OTTUMWA CHURCHES.

Generated at Library of Congress on 2020-12-26 05:05 GMT / https://hdl.handle.net/2027/ia.31858049673159 / http://www.hathitrust.org/access_use#pd-us-google
Public Domain in the United States; Google-digitized



Rev. W. E. Parsons, D.D.,
President 1904.—

PARSONS
COLLEGE,
FAIRFIELD.
FOUNDED
1875.



FOSTER SCIENCE HALL.



LIBRARY BUILDING
PARSONS COLLEGE, FAIRFIELD,
DESIGNED BY ROSSMAN & AMICK
ARCHITECTS, CHICAGO, ILL.

LIBRARY.



Rev. T. D. Ewing, D.D.,
President 1880-1889.

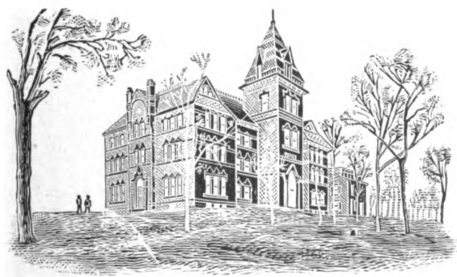
Generated at Library of Congress on 2020-12-26 05:05 GMT / https://hdl.handle.net/2027/iaa.31858049673159 / http://www.hathitrust.org/access_use#pd-us-google / Public Domain in the United States, Google-digitized



PRESIDENT'S HOUSE.



FAIRFIELD HALL.
Academy.



Old Building. Burned 1902.



BALLARD HALL.
Girls' Dormitory.

PARSONS COLLEGE, FAIRFIELD. FOUNDED 1875.

Generated at Library of Congress on 2020-12-26 05:05 GMT / https://hdl.handle.net/2027/iau.31858049673159 / http://www.hathitrust.org/access_use#pd-us-google
Public Domain in the United States; Google-digitized



Rev. E. L. Mattox,
Hangechow, China.



Mrs. E. L. Mattox,
Hangechow, China.



Mrs. Roy Walker,
Bogota, Colombia.



Rev. Roy Walker,
Bogota, Colombia.



Mrs. C. W. McCleary,
Elat, Africa.



Rev. C. W. McCleary,
Elat, Africa.



Mrs. E. H. Miller,
Seoul, Korea.



Rev. R. C. Richardson,
Miraj, India.



Rev. R. C. Smith,
Fategarih, India.



Mrs. G. B. Bruce,
Yeung Kong, China.



Rev. G. B. Bruce,
Yeung Kong, China.

FOREIGN MISSIONARIES EDUCATED AT PARSONS COLLEGE.

Generated at Library of Congress on 2020-12-26 05:05 GMT / https://hdl.handle.net/2027/ia31858049673159 / http://www.hathitrust.org/access_use#pd-us-google
Public Domain in the United States; Google-digitized



Rev. W. C. Dodd, D. D.,
Ken Tung, Burmah.



Rev. C. H. Bandy,
Fatehgarh, India.



Mrs. C. H. Bandy,
Fatehgarh, India.



Rev. W. G. McClure,
Petchaburee, Siam.



Rev. J. E. Shoemaker,
Ningpo, China.



Mrs. J. E. Shoemaker,
Ningpo, China.



Rev. Wm. McCoy,
Krugersdorf, Africa.



Miss Eliza Leonard, M. D.,
Pekin, China.



Rev. P. W. McClintock,
Hainan, China.



Mrs. P. W. McClintock,
Hainan, China.

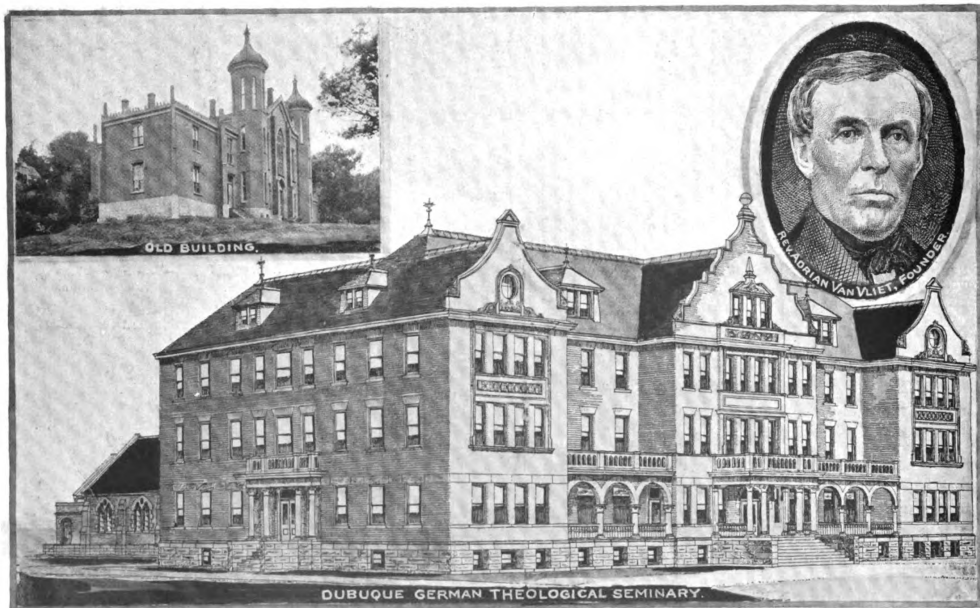


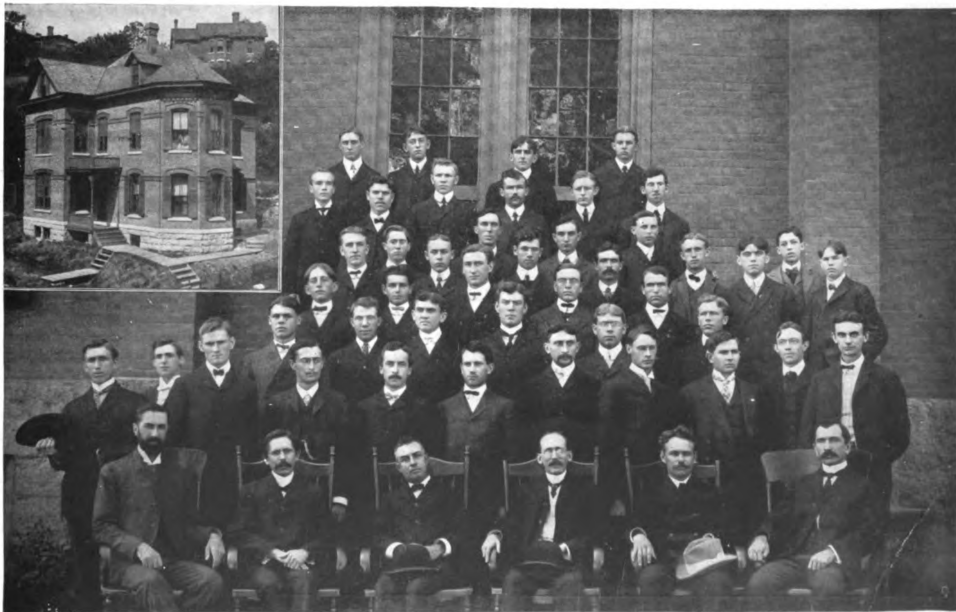
Miss Velma L. Snook,
Pyeng Yang, Korea.



Rev. J. A. Fitch,
Weihsten, China.

FOREIGN MISSIONARIES EDUCATED AT PARSONS COLLEGE.



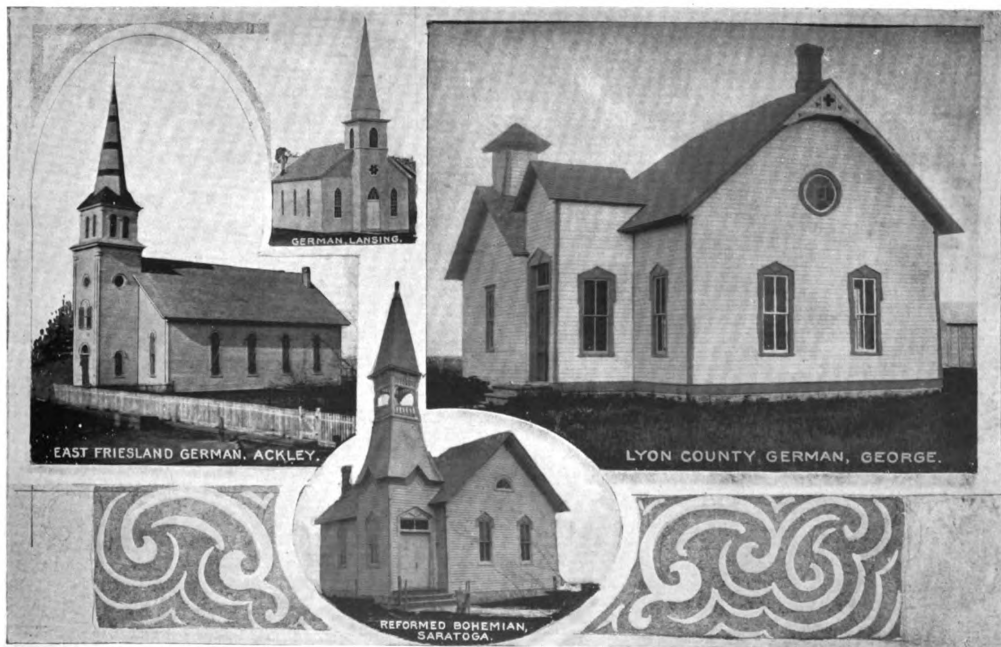


Professor's House.

**GROUP OF PROFESSORS AND STUDENTS.
DUBUQUE GERMAN THEOLOGICAL SEMINARY.**



FOREIGN SPEAKING CHURCHES.



FOREIGN SPEAKING CHURCHES.

Generated at Library of Congress on 2020-12-26 05:05 GMT / https://hdl.handle.net/2027/ia31858049673159
 Public Domain in the United States; Google-digitized / http://www.hathitrust.org/access_use#pd-us-google

Only Presbyterian
Paper in Iowa



REV. SCOTT W. SMITH
Editor



The Subscription is
50 cts. per Year

THE
IOWA PRESBYTERIAN
Official Paper of Synod of Iowa.

VOL. V

JULY, 1905

NO. 2

THE IOWA COMMISSIONERS
Whose Work Secured the General Assembly for 1906



- | | | |
|--------------------|--------------------|--------------------|
| 1. Rev. J. J. ... | 11. Rev. J. J. ... | 21. Rev. J. J. ... |
| 2. Rev. J. J. ... | 12. Rev. J. J. ... | 22. Rev. J. J. ... |
| 3. Rev. J. J. ... | 13. Rev. J. J. ... | 23. Rev. J. J. ... |
| 4. Rev. J. J. ... | 14. Rev. J. J. ... | 24. Rev. J. J. ... |
| 5. Rev. J. J. ... | 15. Rev. J. J. ... | 25. Rev. J. J. ... |
| 6. Rev. J. J. ... | 16. Rev. J. J. ... | 26. Rev. J. J. ... |
| 7. Rev. J. J. ... | 17. Rev. J. J. ... | 27. Rev. J. J. ... |
| 8. Rev. J. J. ... | 18. Rev. J. J. ... | 28. Rev. J. J. ... |
| 9. Rev. J. J. ... | 19. Rev. J. J. ... | 29. Rev. J. J. ... |
| 10. Rev. J. J. ... | 20. Rev. J. J. ... | 30. Rev. J. J. ... |

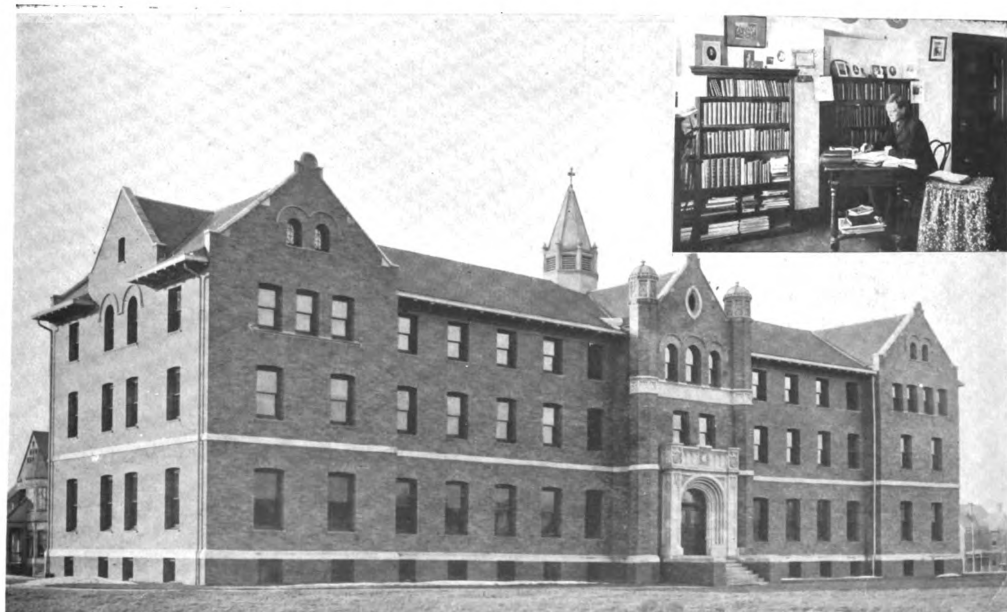
Officially Endorsed
by the Synod



CHARLES M. JONES
Business Manager



Published Monthly
at Cedar Rapids



OMAHA THEOLOGICAL SEMINARY

Students' Room.

Generated at Library of Congress on 2020-12-26 05:05:05 GMT / https://hdl.handle.net/2027/ia31858049673159 / http://www.hathitrust.org/access_use#pd-us-google Public Domain in the United States; Google-digitized



VANDERBURGH HOUSE.



FIRST HOME OF SEMINARY.

The Omaha Theological Seminary is located near the geographical center of the vast territory known as the "Louisiana Purchase." This territory is largely co-extensive with the Mississippi-Missouri valley, the most fertile soil on the American Continent. It is destined to support a very dense population not many years hence. Cities are springing up, various industries are being established, educational institutions are being developed, and States are rising into greatness.



GROUP OF STUDENTS AND PROFESSORS.

The Seminary was begun in 1891. With its usual foresight the Presbyterian church gave the enterprise its endorsement. The Assembly from the beginning has given approval, and devoted friends have come to its support. Thus at a distance of five hundred miles from the nearest of the older Seminaries a training school for the future ministry of the Church is being built up for promoting the influence of Presbyterianism in this vast area.

In 1871 our total membership was 455,378, and our benevolent contributions a little more than \$2,000,000; in 1905 the Minutes show 1,115,662 communicants and above \$5,000,000 benevolent contributions, while exclusive of those for German and colored students the Seminaries for training our ministry were in that year eight in number, in

1906 there are only seven, including Omaha, under control of the Assembly. From 1811 to 1871 for a membership of less than half a million, the church had established eight Theological Schools, while for the period since, and a membership increased to more than a million, we have added only one. There are not now as many Seminaries under the care of the Church, educating her ministry, as when her membership was less than one-half what it is at present.

The old Seminaries have in these years greatly advanced in capacity, but not in proportion as the country about them has grown, and they are reaching out into the west for students who, when they graduate, frequently settle in eastern fields. The output of the older Seminaries could be absorbed within a radius of two hundred miles of their locations. How then can the needs of this vast and growing region be adequately supplied with a ministry unless one be raised up within its own bounds? There must be a "home production" for "home consumption," and unless we rise to the golden opportunity of this Seminary, who can tell how far behind the march of progress our Church will be found within the next generation? A Theological Seminary properly controlled and well fostered is the most powerful agency a church can possess for the propaganda of faith and order. If Presbyterianism is to be a potent influence in the west, it must become possessed of a strong institution of the kind that is being built at Omaha. Theological Schools wisely planted are an essential provision for the growth of the church. Any good school will always attract students from a distance, but the catalogues always show that the region immediately tributary furnishes the largest percentage of students, and it is there its influence is most felt. A professional school of any sort attracts men to the profession for which the school provides training. The presence of a Seminary in this region becomes a providential means for turning the attention of young men in the neighboring colleges and schools to the claims of the ministry. This truth is illustrated in that the larger per cent. of the students of Omaha is drawn from neighboring colleges. In this connection it should also be realized that more than a dozen Presbyterian colleges have grown up in the last generation nearer to Omaha than to any other Seminary of our Church. Omaha Seminary, though the youngest, is by no means least in the work it is actually doing. Its graduates are filling positions not only in the middle west, but also in the far west, and in Foreign Mission fields. The Seminary is now beyond the experimental stage. It has struck its roots deeply, its trunk is growing more sturdy, its branches are spreading in all directions and its fruit is being gathered far and near.

The Seminary has an excellent site of five acres in a choice portion of Omaha, known as Kountze Place. Four years ago it erected an attractive building at a cost of \$45,000. It is thoroughly modern and possessed of all appliances and conveniences which render it adapted to the needs. Since the recent gift of \$50,000 from John H. Converse to endow the chair of "Homiletics and Pastoral Theology" the total property of the Seminary amounts to \$150,000, all acquired in the last six years. The Seminary has completed fifteen years of its work, and is without debt. While the endowment is not sufficient to provide an income equal to current expense, the Seminary is encouraged to hope for better things. There is much to be accomplished before it shall be sufficiently endowed, but its friends believe it will become an even greater power for the cause of Presbyterianism and for the furtherance of the wider interests of the Kingdom.

CHURCHES IN THE SYNOD OF IOWA

Cedar Rapids Presbytery.

1. Blairstown; 2. Watkins; 3. Atkins; 4. Newhall; 5. Pleasant Hill; 6. Shellburg; 7. Vinton; 8. Garrison; 9. Cedar Rapids, Olive; 10. Cedar Rapids, First; 11. Cedar Rapids, Westminster; 12. Cedar Rapids, Sincinle; Memorial Mission; 13. Cedar Rapids, Bohemia; 14. Cedar Rapids, Central Park; 15. Marion; 16. Springville; 17. Paralta; 18. Lion Grove; 19. Mt. Vernon; 20. Mechanicsville; 21. Charene; 22. Wheatland; 23. Clinton; 24. Lyons; 25. Delmar; 26. Pencil; 27. Bellevue; 28. Andrew; 29. Emeline; 30. Wyoming; 31. Onslow; 32. Center Junction; 33. Bethel; 34. Scotch Grove; 35. Richland Center; 36. Monticello; 37. Anamosa.

Corning Presbytery.

1. Dlaguani; 2. Mt. Ayr; 3. Afton; 4. Creston; 5. Platte Center; 6. Lenox; 7. Sharpburg; 8. Conway; 9. Bedford; 10. Prairie Star; 11. Morning Star; 12. Corning; 13. Brooks; 14. Nodaway; 15. Villisca; 16. Clarinda; 17. Yorktown; 18. Norwich; 19. Shenandoah; 20. Essex; 21. Hamburg; 22. Sidney; 23. Anderson; 24. Handolph; 25. Earl Oak; 26. Emerson; 27. Jativa; 28. Pilot Grove; 29. Zear; 30. Arlington; 31. Grayty; 32. Bothay; 33. Prairie Chapel; 34. West Center.

Council Bluffs Presbytery.

1. Griswold; 2. Greenfield; 3. Menlo; 4. Guthrie Center; 5. Casey; 6. Adair; 7. Atlantic; 8. Audubon; 9. Marine; 10. Walnut; 11. Avoca; 12. Shelby; 13. Hancock; 14. Carson; 15. Sharon; 16. Council Bluffs, First; 17. Neola; 18. Missouri Valley; 19. Logan; 20. Woodbine; 21. Groveland; 22. Council Bluffs, Second; 23. Lora; 24. Columbia; 25. Hardin Township; 26. Lone Star; 27. Bentley; 28. Grange Hall; 29. California Junction.

Des Moines Presbytery.

1. White Oak; 2. Fremont; 3. Oskaloosa; 4. New Sharon; 5. Howell; Holland; 6. Olive; 7. Plymouth; 8. Knoxville; 9. Newton; 10. Mariposa; 11. Laurel; 12. Colfax; 13. Ridgepole; 14. Grimes; 15. Perry; 16. Albia; 17. Dallas Center; 18. Walker; 19. Adel; 20. Dexter; 21. Earlham; 22. Des Moines, Central; 23. Des Moines, Westminster; 24. Des Moines, First; 25. Des Moines, Orion Heights; 26. Des Moines, Sixth; 27. Des Moines, Hope; 28. Hartford; 29. Indianola; 30. Winterset; 31. Mesota; 32. English; 33. Jacksonville; 34. Osceola; 35. Lucas; 36. Cleveland; 37. Chariton; 38. Russell; 39. Albia; 40. Unionville; 41. Monilton; 42. Centerville; 43. Seymour; 44. Prouess City; 45. Corydon; 46. Alberton; 47. Livestock; 48. Derby; 49. LeRoy; 50. Garden Grove; 51. Leon; 52. Milo; 53. Des Moines, Highland Park; 54. Humeson; 55. Panora.

Dubuque Presbytery.

1. Zion; 2. Hopkinton; 3. Prairie; 4. Dubuque, Westminster; 5. Dubuque, Fair; 6. Dubuque, German; 7. Sherrill; 8. Centerville; 9. Farley; 10. Dyersville; 11. Manchester; 12. Pine Creek; 13. Rowley; 14. Walker; 15. Cono Center; 16. Independence, First; 17. Independence, German; 18. Jessup; 19. Pleasant Grove; 20. Hazelton; 21. Belwell; 22. Maynard; 23. Wilson's Grove; 24. Bethel, West Union; 25. Rossville; 26. Frankville; 27. Zalmona; 28. Lansing, First; 29. Lansing, German; 30. Hope; 31. Lime Springs; 32. Chester; 33. McHenry, German; 34. Otterville; 35. Reformed Bohemia; 36. Cascade; 37. Bethelton; 38. Volga; 39. Unity; 40. Prairieburg.

Fort Dodge Presbytery.

1. Immanuel German; 2. Wheatland, German; 3. Arcadia, German; 4. Manning; 5. Coon Rapids; 6. Carroll; 7. Glidden; 8. Churdan; 9. Jefferson; 10. Paton; 11. Dana; 12. Grand Junction; 13. Boone; 14. Fort Dodge; 15. Lohrville; 16. Iockeville; 17. Lake City; 18. Pomeroy; 19. Fonda; 20. Plover; 21. Hoffe; 22. Gilmore City; 23. Livermore; 34. West Bend; 25. Spirit Lake; 26. Estherville; 27. Emmet County, First; 28. Maple Hill; 29. Haffa; 30. Ringsted; 31. Hoprig; 32. Depew; 33. Lone Rock; 34. Bethany; 35. Algona; 36. Ottosen; 37. Idaman; 38. Burt; 39. Armstrong; 40. Elm Grove; 41. Lytton; 42. Callender; 43. Calvary; 44. Irvington; 45. Wallingford; 46. Germania; 47. Pochouts; 48. Lake Park; 49. Harris; 50. Huntington; 51. Dolliver; 52. Titonka; 53. Varina; 54. Laverne.

Iowa Presbytery.

1. Kookuk, Westminster; 2. Montrose; 3. Ft. Madison; 4. West Point; 5. Memorial; 6. Primrose; 7. Markham; 8. Sharon; 9. Bonaparte; 10. Bentonport; 11. Mt. Zion; 12. Dover; 13. Lebanon; 14. Chequest; 15. Troy; 16. Hindlingham; 17. Shuman; 18. Bloomfield; 19. Milton; 20. Ottumwa; First; 21. Ottumwa, East End; 22. Kirksville; 23. Martinsburg; 24. Libertyville; 25. Fairfield; 26. Ottumwa, West End; 27. Salina; 28. Hedrick; 29. Mt. Pleasant; 30. New London; 31. Middletown; 32. Oakville; 33. Burlington; First; 34. Kossuth; 35. Mediapolis; 36. Morning Sun; 37. Oakland; 38. Wapello; 39. Kookuk, Second; 40. Winfield; 41. Cedar; 42. Wilson; 43. Kingston.

Iowa City Presbytery.

1. Washington; 2. Bethel; 3. Crawfordsville; 4. Columbus Central; 5. Muscatine; 6. Hernon; 7. Nola; 8. Blue Grass; 9. Davenport, First; 10. Davenport, Second; 11. LeClaire; 12. Princeton; 13. Eldridge; 14. Summitt; 15. Mt. Union; 16. Milton; 17. Sugar Creek; 18. Atalissa; 19. West Liberty; 20. West Branch; 21. Cedar Valley; 22. Scott; 23. Tipton; 24. Red Oak Grove; 25. Fairview; 26. Iowa City; 27. Unity; 28. Oxford; 29. Union; 30. Shiloh; 31. Williamsburg; 32. Marengo; 33. La. Dorn; 34. Brooklyn; 35. Malcom; 36. Mountzinn; 37. Deep River; 38. What Cheer; 39. Sigourney; 40. Keota; 41. Lafayette; 42. Hills; 43. Haskins; 44. Brighton.

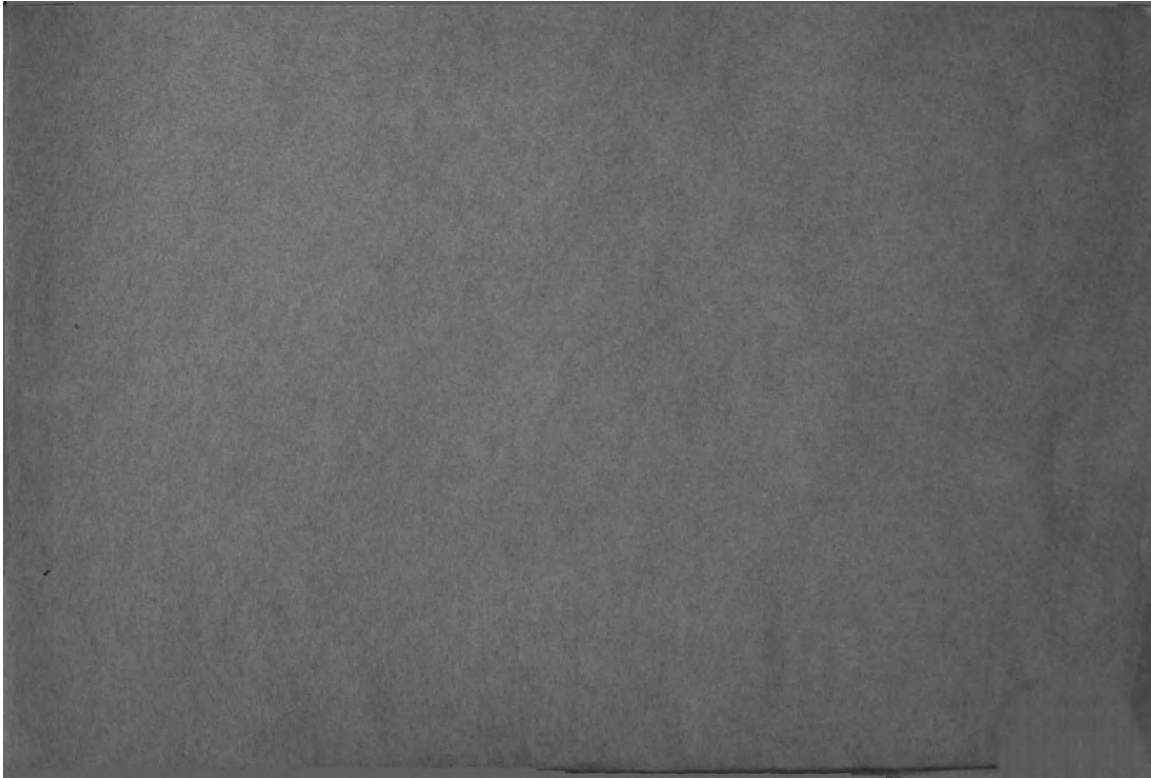
Sioux City Presbytery.

1. Mapleton; 2. Denison; 3. Charter Oak; 4. Manilla; 5. Vail; 6. Auburn; 7. Sae City; 8. Sulphur Springs; 9. Lakeside-Storm Lake; 10. Alta; 11. Schaller; 12. Osbeck; 13. Ida Grove; 14. Battle Creek; 15. Lawton; 16. Drouson; 17. Sioux City, First; 18. Sioux City, Second; 19. Sioux City, Third; 20. Sioux City, Olive; 21. Sioux City, Morningside; 22. Plymouth; 23. Irton; 24. Hewardson; 25. LeMars; 26. Union Township; 27. Larrabee; 28. Cleburn; 29. Morison; 30. Cherokee; 31. Paulina; 32. Hospers; Holland; 33. Inwood; 34. Lyon County, German; 35. Zion, German; 36. Ashton; 37. Saylor; 38. Mt. Pleasant; 39. Zear, German; 40. Hope, German; 41. Earl; 42. Sidney, German; 43. Elmer; 44. Wall Lake; 45. Neuma; 46. Pitzer; 47. Hardley; 48. Hessia; 49. Hull; 50. Matlock, German.

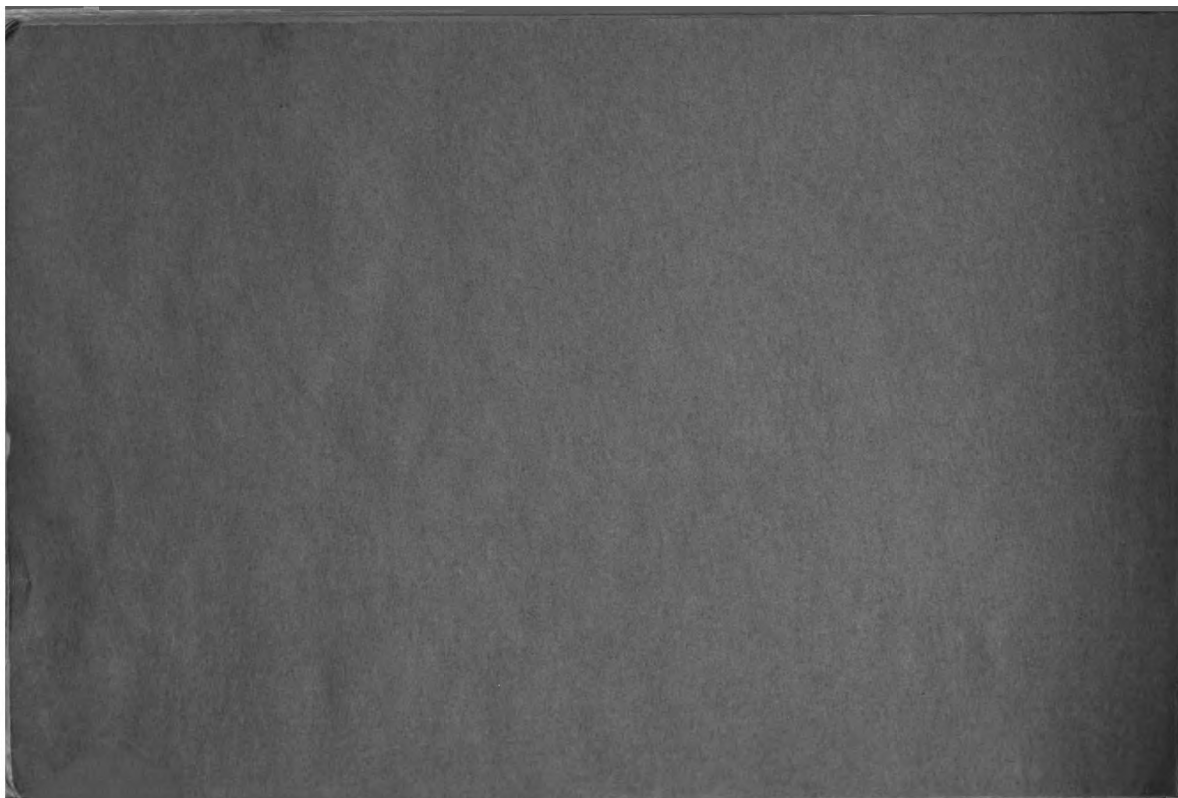
Waterloo Presbytery.

1. Union German; 2. Grove; 3. Clarksville; 4. Janesville; 5. Pisgah; 6. Appleton; 7. East Friesland, German; 8. West Friesland, German; 9. Ackley; 10. Dows; 11. Williams; 12. Kaurar, German; 13. Point Pleasant; 14. Eldora; 15. Holland, German; 16. Grundy Center; 17. Morrison; 18. Cedar Falls; 19. Waterloo; 20. Cedar Valley; 21. LaPorte City; 22. Dysart; 23. Tranquility; 24. Salem; 25. Conrad; 26. Albion; 27. Nevada; 28. State Center; 29. Marshalltown; 30. Toledo; 31. Tama; 32. Unity; 33. Mason City; 34. Eden, German; 35. Stout; 36. Aradale; 37. Grundy Center, German; 38. Wellsburg; 39. Owassa; 40. Westminster, Waterloo.

Generated at Library of Congress on 2020-12-26 05:05 GMT / <https://hdl.handle.net/2027/iau.31858049673159>
Public Domain in the United States; Google-digitized / http://www.hathitrust.org/access_use#pd-us-google



Generated at Library of Congress on 2020-12-26 05:05 GMT / https://hdl.handle.net/2027/iau.11858049673159
Public Domain in the United States; Google-digitized / http://www.hathitrust.org/access_use#pd-us-google





Generated at Library of Congress on 2020-12-26 05:05 GMT / <https://hdl.handle.net/2027/iau.31858049673159>
Public Domain in the United States; Google-digitized / http://www.hathitrust.org/access_use#pd-us-google

